

RESOLUTION 23-11137

A RESOLUTION OF THE CITY OF BILLINGS, MONTANA PURSUANT TO ARTICLE II. CITY BOUNDARIES, MCA 7- 1-114(1)(a); ANNEXATION PROCEDURES, MCA 7-2-4201 ET SEQ. AND SETTING FORTH AN ANNEXATION POLICY;

WHEREAS, the City Council adopted the City of Billings Annexation Policy by Resolution on November 22, 2004, further amended it by Resolution on April 10, 2006, May 23, 2011, May 23, 2016, and on May 8, 2017, and it is amended from time to time.

WHEREAS, the Limits of Annexation Map was last amended by Resolution on August 23, 2021; and

WHEREAS, the Policy states that the Map shall be reviewed and or revised whenever the Capital Improvements Plan is revised; and

WHEREAS, the City Council approved the FY 2024-2028 Capital Improvements Plan on December 19, 2022; and

WHEREAS, the City Council has directed staff and budgeted funds to be proactive in making infrastructure investments to annex and serve areas in, and in proximity to, the Long Range Urban Planning Area of the Limits of Annexation Map to ensure new development is built to City Standards and City growth is not inhibited by County development;

WHEREAS, the City may self-initiate amendments to the map to include areas in the City Annexation Petition Area where it wishes to be proactive to ensure new development is built to City Standards.

NOW, THEREFORE BE IT RESOLVED BY THE CITY COUNCIL OF THE CITY OF BILLINGS, MONTANA:

That the City Council now makes and adopts the following amendment to the Limits of Annexation Map to include the area along Central Avenue west of Shiloh Road, South of Broadwater Avenue and north of Monad Road in the City Annexation Petition Area:

**LIMITS OF ANNEXATION MAP
Revised, July 10, 2023
Shown as Exhibit A Attached**

APPROVED AND PASSED by the City Council of the City of Billings, this 10th
day of July, 2023.



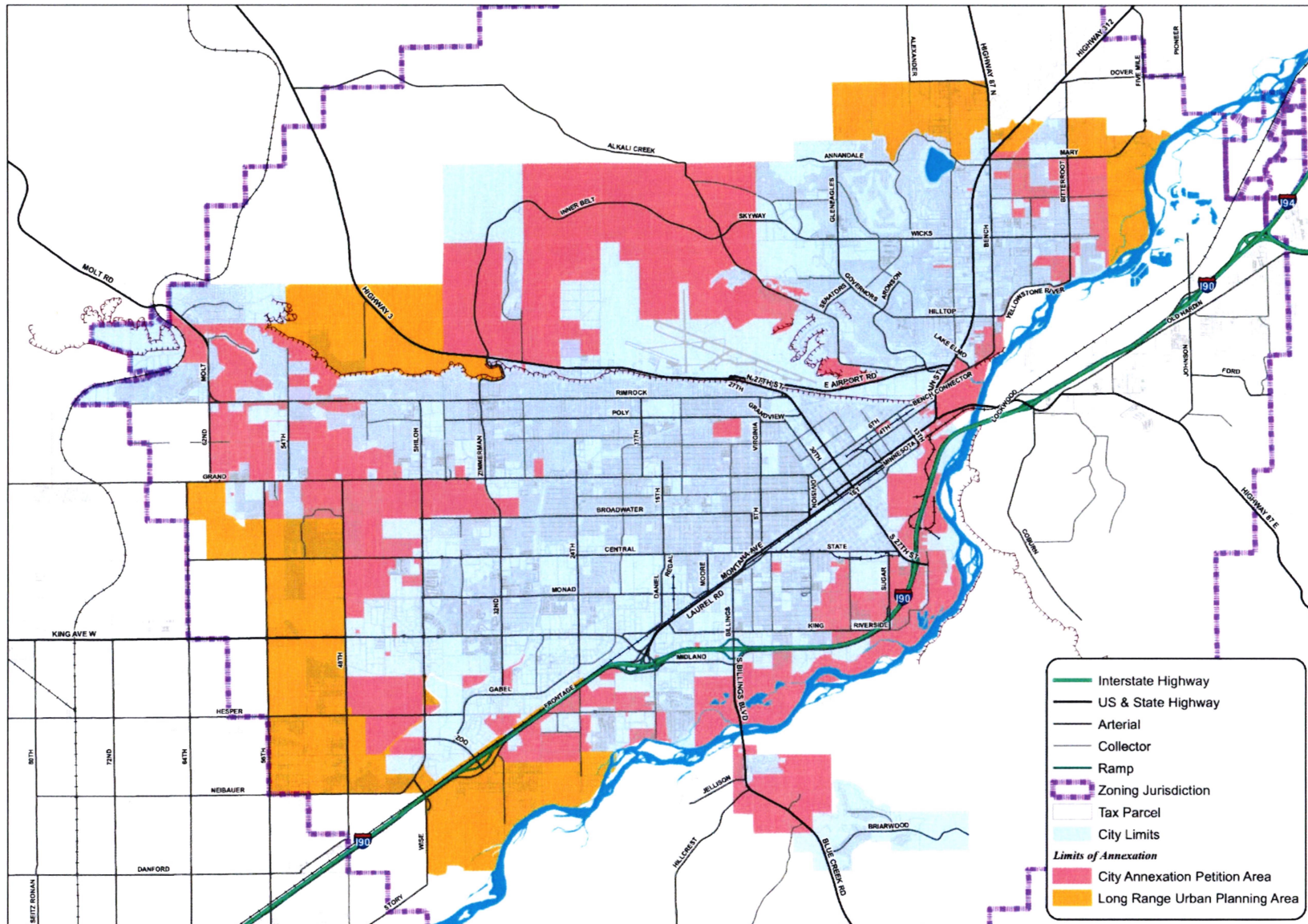
CITY OF BILLINGS:

BY: William A. Cole
William A. Cole, Mayor

ATTEST:

BY: Denise R. Bohlman Deputy City Clerk for
Denise R. Bohlman, City Clerk

Exhibit A



Limits of Annexation Map

Revised July 10, 2023

Map Document: g:\work\2023\GIS_Files\Maping_Projects\Planning\2016\RFI_0097_LimitsOfAnnexationRFI_0097_LimitsOfAnnexation_07102023 (FINAL).mxd
Date: 7/11/2023

