

2022 PARKS WI-FI PROJECT Request for Proposals (RFP)

The following clarifications are provided to all proposers who have, or will, submit a completed ***Intent to Respond*** form prior to the RFP deadline of January 28, 2022.

1. Section 2: Background, Introduction, Objectives & Goals; Introduction and Objectives; Page 5:

QUESTION: Is this an all-new system or a replacement for an existing system?

RESPONSE: All-new system.

2. Section 2: Background, Introduction, Objectives & Goals; Project Goals; Page 6:

QUESTION: What will the statistical data use be?

RESPONSE: The City may use the statistical data to understand how the system is being used, to evaluate the need for system updates, to explore the possibility of adding new parks to the system, etc.

3. Section 2: Background, Introduction, Objectives & Goals; Project Goals; Page 6:

QUESTION: Will ongoing maintenance and support require park escorts?

RESPONSE: Depends on the location. If it is a secure area, yes.

4. Section 2: Background, Introduction, Objectives & Goals; Project Goals; Page 6:

QUESTION: Will ongoing maintenance and support have 24/7/365 access?

RESPONSE: It is anticipated that maintenance and support will be required during open park hours (i.e., 365 days per year from 5:00 a.m. MST to 10:00 p.m. MST).

5. Section 2: Background, Introduction, Objectives & Goals; unspecified RFP section:

QUESTION: What is the expected user count per park?

RESPONSE: Unknown; this will be a new, public Wi-Fi system.

6. Section 2: Background, Introduction, Objectives & Goals; Park Locations & Site Visits; Page 6:

QUESTION: What are the existing structures?

RESPONSE: See attached aerial photos of each of the eight (8) parks with labels.

7. Section 2: Background, Introduction, Objectives & Goals; unspecified RFP section:

QUESTION: Will man lift resources be available or to rent?

RESPONSE: The City will not provide any equipment, tools, etc.

8. Section 2: Background, Introduction, Objectives & Goals; unspecified RFP section:

QUESTION: Will a secure staging / storage area be provided?

RESPONSE: Will be explored and decided during contract negotiations with the winning proposer.

9. Section 2: Background, Introduction, Objectives & Goals; unspecified RFP section:

QUESTION: For internet traffic is there a current Circuit installed?

RESPONSE: The City is not providing any internet service. We request that the proposed solution from all responders include internet service (cellular, cable modem, fiber, satellite, or other) for each of the park Wi-Fi locations.

10. Section 2: Background, Introduction, Objectives & Goals; unspecified RFP section:

QUESTION: If no Circuit do they want a Quote? (follow up to question #9 above)

RESPONSE: A complete response to our RFP will include Internet Services for each site. The proposal should include details on what ISP is being proposed at each site and the details such as 1) Any one-time costs to establish internet service at each site, 2) The available bandwidth at each site, 3) Monthly costs for internet and on-going service & support of the sites. Be sure to provide a breakdown of the monthly ISP costs including if they are based on usage at a single site, a pooled style plan, or unlimited usage, if there are limitations or increased costs if the usage at sites reach a certain threshold, and will we be provided with monthly usage reporting showing details for each site. Overall, on-going costs should include details concerning the monthly cost of all internet services along with hardware support and services to ensure each of the locations are working properly.

11. Section 2: Background, Introduction, Objectives & Goals; unspecified RFP section:

QUESTION: How many devices per user expected per venue?

RESPONSE: Unknown; this will be a new, public Wi-Fi system. Please provide system / device information and/or limits specific to your proposed design and associated hardware / software.

12. Section 2: Background, Introduction, Objectives & Goals; Proposal Contents; Page 7:

Proposers should also include the following additional details within their proposals:

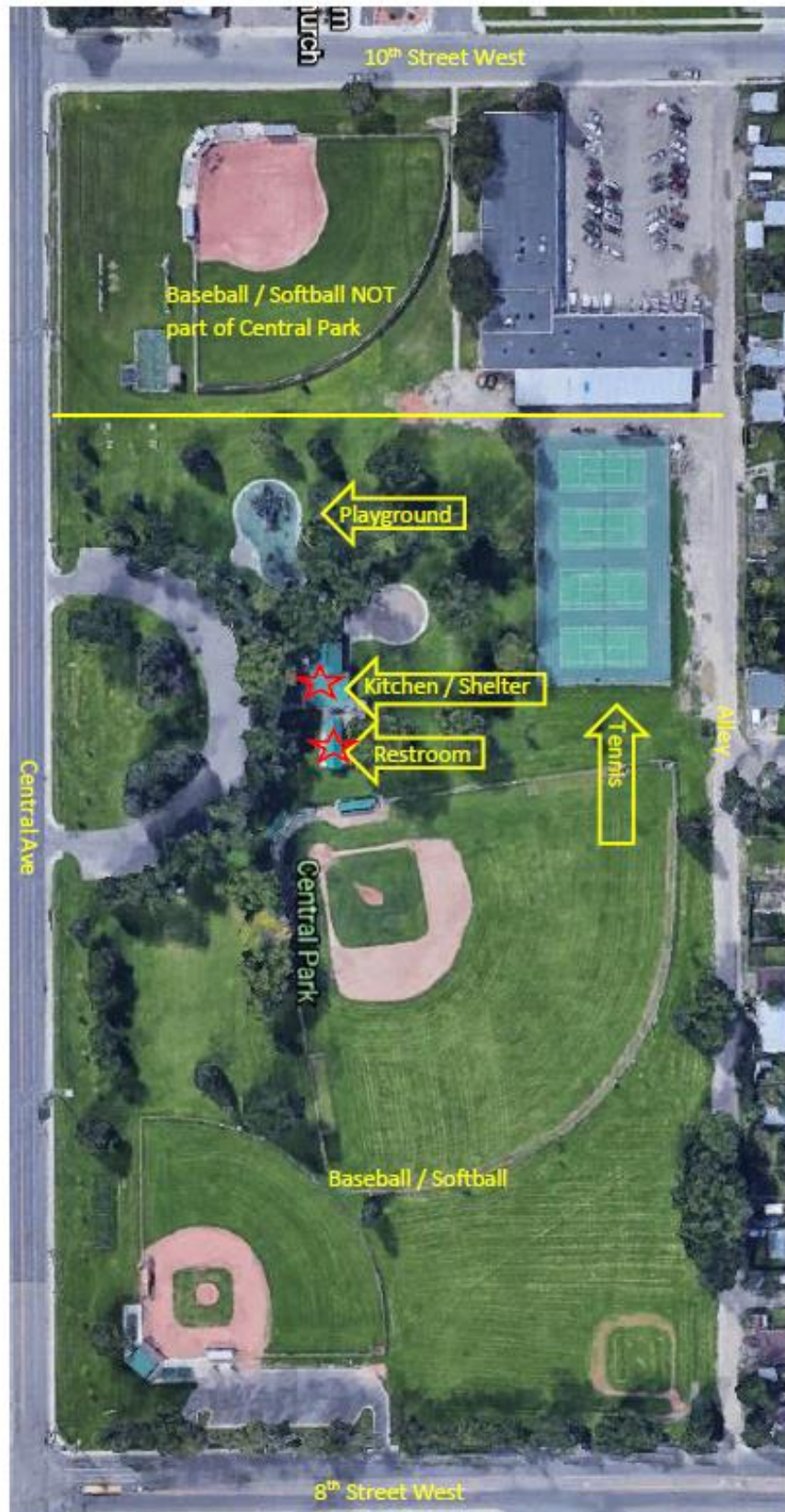
- Who will own the hardware and software to support the proposed solution?
- What internet provider or solution do you propose to support the Wi-Fi solution in each of the park locations?

- Is your price based on an estimate amount of use each month, or is the bandwidth unlimited?
- If there are bandwidth restrictions, what are they and what happens as we approach and/or reach the monthly maximums?
- Are there additional costs if our bandwidth usage exceeds the proposed and/or estimated limits?
- Bandwidth Management: Are there any management tools and/or reports to allow us to monitor the daily, weekly, and monthly usage at individual parks? Collective view of usage at all locations?

★ = Existing power locations ○ = Potential power location



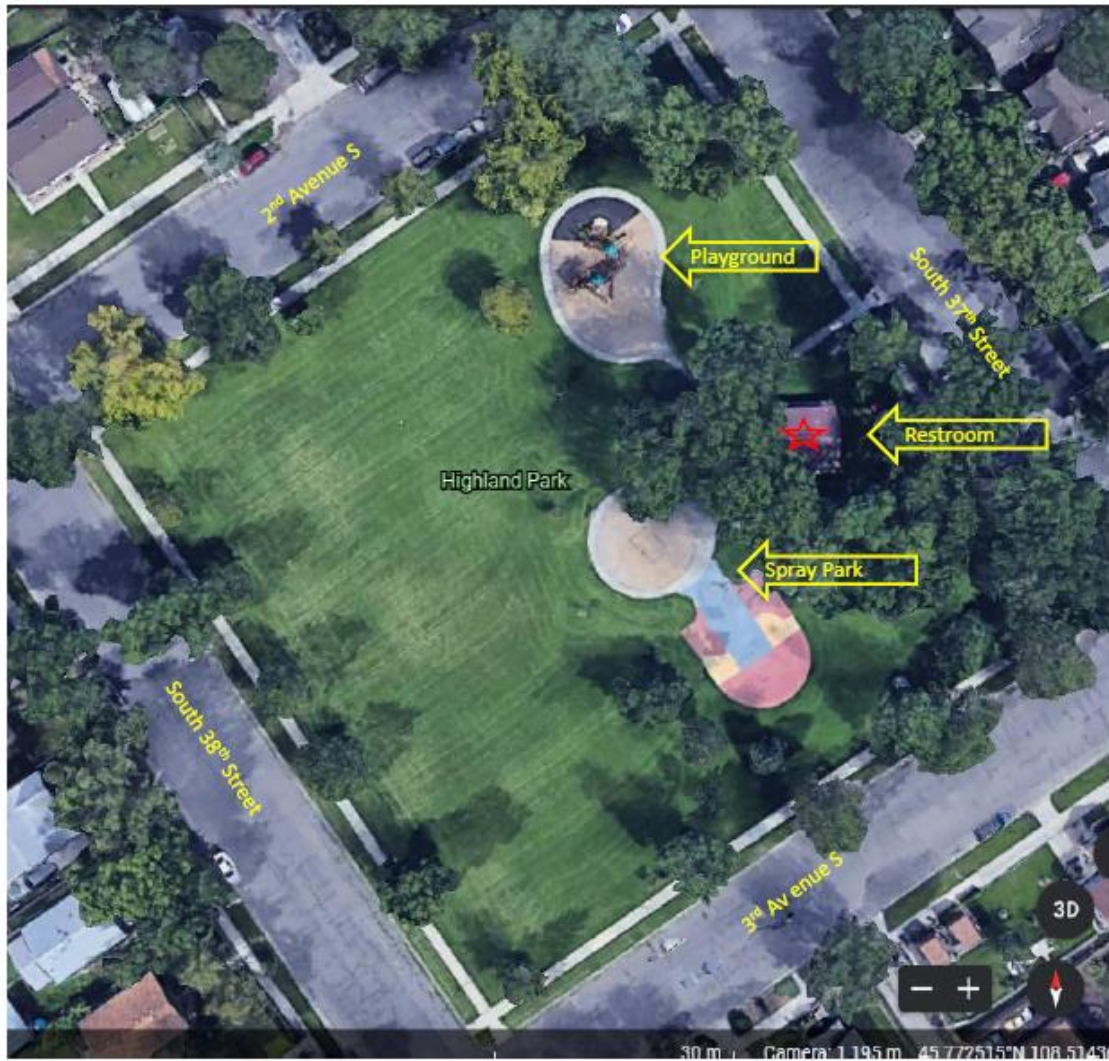
★ = Existing power locations ○ = Potential power location



★ = Existing power locations ○ = Potential power location



☆ = Existing power locations ○ = Potential power location



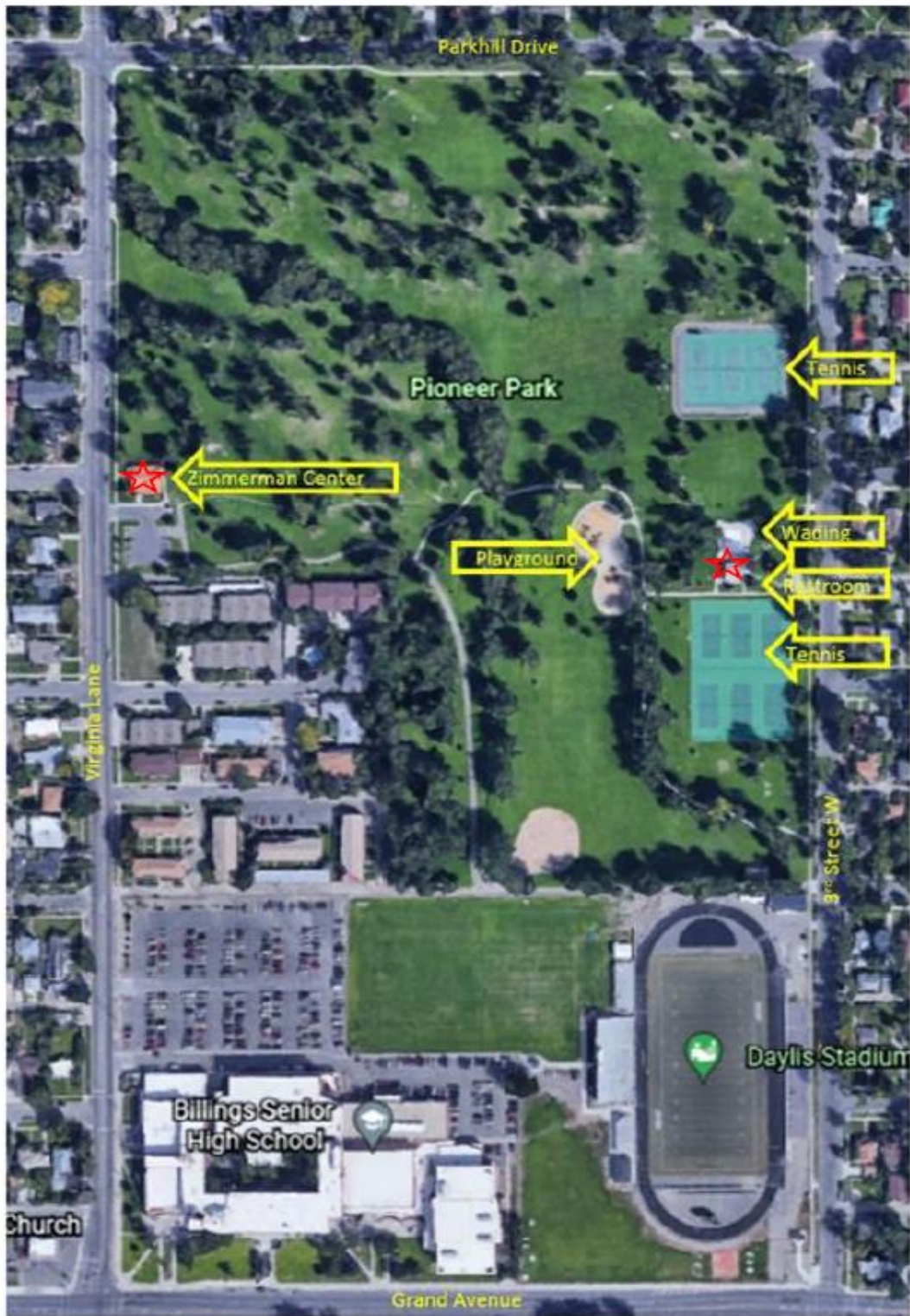
★ = Existing power locations ○ = Potential power location



★ = Existing power locations ○ = Potential power location



★ = Existing power locations ○ = Potential power location



★ = Existing power locations ○ = Potential power location

