

THE NCSTM

The National Citizen SurveyTM

Billings, MT

Technical Appendices
FINAL
2016



NRC
National Research Center Inc

2955 Valmont Road Suite 300
Boulder, Colorado 80301
n-r-c.com • 303-444-7863



Leaders at the Core of Better Communities

777 North Capitol Street NE Suite 500
Washington, DC 20002
icma.org • 800-745-8780

Contents

Appendix A: Complete Survey Responses	1
Appendix B: Benchmark Comparisons	20
Appendix C: Detailed Survey Methods	33
Appendix D: Survey Materials	38



The National Citizen Survey™
© 2001-2016 National Research Center, Inc.

The NCS™ is presented by NRC in collaboration with ICMA.

NRC is a charter member of the AAPOR Transparency Initiative, providing clear disclosure of our sound and ethical survey research practices.

Appendix A: Complete Survey Responses

Responses excluding “don’t know”

The following pages contain a complete set of responses to each question on the survey, excluding the “don’t know” responses. The percent of respondents giving a particular response is shown followed by the number of respondents (denoted with “N=”).

Table 1: Question 1

Please rate each of the following aspects of quality of life in Billings:	Excellent		Good		Fair		Poor		Total	
Billings as a place to live	24%	N=94	51%	N=201	22%	N=87	2%	N=9	100%	N=391
Your neighborhood as a place to live	32%	N=125	43%	N=167	19%	N=73	6%	N=25	100%	N=390
Billings as a place to raise children	23%	N=81	46%	N=161	26%	N=91	6%	N=21	100%	N=353
Billings as a place to work	17%	N=65	50%	N=189	22%	N=82	10%	N=39	100%	N=375
Billings as a place to visit	15%	N=58	40%	N=151	34%	N=127	11%	N=41	100%	N=377
Billings as a place to retire	18%	N=59	42%	N=137	28%	N=92	13%	N=42	100%	N=330
The overall quality of life in Billings	16%	N=62	58%	N=224	22%	N=84	5%	N=17	100%	N=388

Table 2: Question 2

Please rate each of the following characteristics as they relate to Billings as a whole:	Excellent		Good		Fair		Poor		Total	
Overall feeling of safety in Billings	7%	N=29	48%	N=188	33%	N=129	12%	N=45	100%	N=391
Overall ease of getting to the places you usually have to visit	18%	N=70	54%	N=212	22%	N=87	6%	N=23	100%	N=392
Quality of overall natural environment in Billings	16%	N=63	49%	N=188	30%	N=115	6%	N=21	100%	N=387
Overall "built environment" of Billings (including overall design, buildings, parks and transportation systems)	6%	N=24	37%	N=144	42%	N=164	15%	N=57	100%	N=390
Health and wellness opportunities in Billings	30%	N=116	48%	N=183	17%	N=66	5%	N=19	100%	N=384
Overall opportunities for education and enrichment	17%	N=65	46%	N=173	29%	N=109	8%	N=32	100%	N=378
Overall economic health of Billings	11%	N=40	50%	N=186	33%	N=120	6%	N=23	100%	N=369
Sense of community	9%	N=34	40%	N=154	38%	N=145	13%	N=51	100%	N=383
Overall image or reputation of Billings	11%	N=44	43%	N=167	33%	N=128	12%	N=45	100%	N=384

Table 3: Question 3

Please indicate how likely or unlikely you are to do each of the following:	Very likely		Somewhat likely		Somewhat unlikely		Very unlikely		Total	
Recommend living in Billings to someone who asks	36%	N=138	46%	N=179	11%	N=41	7%	N=28	100%	N=386
Remain in Billings for the next five years	61%	N=233	22%	N=85	11%	N=40	6%	N=24	100%	N=381

Table 4: Question 4

Please rate how safe or unsafe you feel:	Very safe		Somewhat safe		Neither safe nor unsafe		Somewhat unsafe		Very unsafe		Total	
In your neighborhood during the day	63%	N=245	30%	N=116	3%	N=11	4%	N=16	1%	N=3	100%	N=392
In Billings' downtown/commercial area during the day	24%	N=91	45%	N=173	12%	N=47	15%	N=59	4%	N=16	100%	N=386

The National Citizen Survey™

Table 5: Question 5

Please rate each of the following characteristics as they relate to Billings as a whole:	Excellent		Good		Fair		Poor		Total	
Traffic flow on major streets	5%	N=21	38%	N=149	41%	N=159	16%	N=63	100%	N=391
Ease of public parking	7%	N=26	33%	N=126	42%	N=161	19%	N=72	100%	N=385
Ease of travel by car in Billings	16%	N=63	49%	N=189	28%	N=111	7%	N=26	100%	N=388
Ease of travel by public transportation in Billings	5%	N=12	22%	N=50	31%	N=70	41%	N=92	100%	N=224
Ease of travel by bicycle in Billings	5%	N=13	30%	N=84	39%	N=110	26%	N=71	100%	N=278
Ease of walking in Billings	12%	N=43	42%	N=154	32%	N=119	14%	N=52	100%	N=368
Availability of paths and walking trails	15%	N=51	43%	N=147	30%	N=103	12%	N=42	100%	N=343
Air quality	10%	N=40	54%	N=205	24%	N=93	12%	N=44	100%	N=382
Cleanliness of Billings	5%	N=21	34%	N=133	41%	N=160	20%	N=76	100%	N=390
Overall appearance of Billings	6%	N=23	42%	N=162	40%	N=153	13%	N=49	100%	N=387
Public places where people want to spend time	7%	N=27	44%	N=163	38%	N=139	11%	N=41	100%	N=369
Variety of housing options	9%	N=32	41%	N=144	33%	N=118	17%	N=61	100%	N=356
Availability of affordable quality housing	5%	N=18	27%	N=92	40%	N=139	28%	N=94	100%	N=343
Fitness opportunities (including exercise classes and paths or trails, etc.)	20%	N=74	51%	N=182	24%	N=85	5%	N=19	100%	N=360
Recreational opportunities	14%	N=53	44%	N=166	32%	N=122	9%	N=35	100%	N=375
Availability of affordable quality food	18%	N=68	46%	N=179	29%	N=111	7%	N=28	100%	N=387
Availability of affordable quality health care	26%	N=94	43%	N=156	20%	N=73	11%	N=41	100%	N=364
Availability of preventive health services	27%	N=94	42%	N=150	25%	N=89	6%	N=21	100%	N=355
Availability of affordable quality mental health care	13%	N=31	32%	N=78	33%	N=79	22%	N=53	100%	N=242

Table 6: Question 6

Please rate each of the following characteristics as they relate to Billings as a whole:	Excellent		Good		Fair		Poor		Total	
Availability of affordable quality child care/preschool	9%	N=17	39%	N=74	37%	N=71	15%	N=29	100%	N=190
K-12 education	16%	N=49	45%	N=134	33%	N=96	6%	N=16	100%	N=295
Adult educational opportunities	14%	N=43	47%	N=146	36%	N=110	4%	N=12	100%	N=311
Opportunities to attend cultural/arts/music activities	15%	N=54	50%	N=180	26%	N=94	8%	N=29	100%	N=358
Opportunities to participate in religious or spiritual events and activities	26%	N=86	55%	N=185	15%	N=48	4%	N=15	100%	N=334
Employment opportunities	9%	N=33	47%	N=166	30%	N=108	13%	N=46	100%	N=353
Shopping opportunities	18%	N=71	46%	N=179	27%	N=106	8%	N=32	100%	N=388
Cost of living in Billings	6%	N=24	35%	N=133	45%	N=173	14%	N=55	100%	N=385
Overall quality of business and service establishments in Billings	12%	N=47	52%	N=198	31%	N=116	5%	N=18	100%	N=379
Vibrant downtown/commercial area	7%	N=24	36%	N=131	44%	N=160	14%	N=50	100%	N=365
Overall quality of new development in Billings	7%	N=25	48%	N=169	38%	N=136	7%	N=23	100%	N=353
Opportunities to participate in social events and activities	15%	N=55	50%	N=182	28%	N=102	7%	N=27	100%	N=366
Opportunities to volunteer	23%	N=76	51%	N=173	23%	N=76	4%	N=12	100%	N=338
Opportunities to participate in community matters	15%	N=52	46%	N=157	30%	N=103	9%	N=29	100%	N=340
Openness and acceptance of the community toward people of diverse backgrounds	10%	N=36	33%	N=112	33%	N=111	24%	N=82	100%	N=341
Neighborliness of residents in Billings	10%	N=37	42%	N=160	37%	N=140	12%	N=45	100%	N=381

The National Citizen Survey™

Table 7: Question 7

Please indicate whether or not you have done each of the following in the last 12 months.	No		Yes		Total	
Made efforts to conserve water	24%	N=93	76%	N=295	100%	N=388
Made efforts to make your home more energy efficient	24%	N=92	76%	N=296	100%	N=388
Observed a code violation or other hazard in Billings	37%	N=141	63%	N=245	100%	N=386
Household member was a victim of a crime in Billings	79%	N=308	21%	N=80	100%	N=387
Reported a crime to the police in Billings	63%	N=244	37%	N=143	100%	N=387
Stocked supplies in preparation for an emergency	69%	N=266	31%	N=122	100%	N=387
Campaigned or advocated for an issue, cause or candidate	76%	N=296	24%	N=91	100%	N=388
Contacted the City of Billings (in-person, phone, email or web) for help or information	64%	N=250	36%	N=139	100%	N=389
Contacted Billings elected officials (in-person, phone, email or web) to express your opinion	83%	N=321	17%	N=67	100%	N=389

Table 8: Question 8

In the last 12 months, about how many times, if at all, have you or other household members done each of the following in Billings?	2 times a week or more		2-4 times a month		Once a month or less		Not at all		Total	
Used Billings recreation centers or their services	11%	N=43	16%	N=61	33%	N=126	40%	N=152	100%	N=382
Visited a neighborhood park or City park	21%	N=81	30%	N=117	38%	N=146	11%	N=44	100%	N=388
Used Billings public libraries or their services	6%	N=21	17%	N=66	33%	N=128	44%	N=169	100%	N=384
Participated in religious or spiritual activities in Billings	17%	N=64	24%	N=91	17%	N=67	42%	N=162	100%	N=385
Attended a City-sponsored event	1%	N=5	9%	N=33	45%	N=174	45%	N=173	100%	N=385
Used bus, rail, subway or other public transportation instead of driving	4%	N=14	3%	N=11	4%	N=17	89%	N=345	100%	N=388
Carpooled with other adults or children instead of driving alone	9%	N=35	16%	N=63	17%	N=67	57%	N=220	100%	N=385
Walked or biked instead of driving	17%	N=65	14%	N=55	24%	N=95	44%	N=172	100%	N=387
Volunteered your time to some group/activity in Billings	13%	N=51	14%	N=54	25%	N=95	48%	N=186	100%	N=387
Participated in a club	8%	N=31	13%	N=51	17%	N=67	62%	N=240	100%	N=388
Talked to or visited with your immediate neighbors	47%	N=182	36%	N=140	13%	N=51	4%	N=16	100%	N=388
Done a favor for a neighbor	24%	N=92	29%	N=111	33%	N=129	15%	N=57	100%	N=388

Table 9: Question 9

Thinking about local public meetings (of local elected officials like City Council or County Commissioners, advisory boards, town halls, HOA, neighborhood watch, etc.), in the last 12 months, about how many times, if at all, have you or other household members attended or watched a local public meeting?	2 times a week or more		2-4 times a month		Once a month or less		Not at all		Total	
Attended a local public meeting	1%	N=3	3%	N=11	15%	N=56	82%	N=314	100%	N=383
Watched (online or on television) a local public meeting	3%	N=10	8%	N=33	26%	N=101	63%	N=240	100%	N=384

Table 10: Question 10

Please rate the quality of each of the following services in Billings:	Excellent		Good		Fair		Poor		Total	
Police services	19%	N=69	42%	N=150	27%	N=98	11%	N=41	100%	N=358
Fire services	32%	N=105	54%	N=176	13%	N=43	1%	N=4	100%	N=329
Ambulance or emergency medical services	31%	N=96	54%	N=166	12%	N=37	3%	N=10	100%	N=309
Crime prevention	5%	N=17	37%	N=120	38%	N=126	20%	N=65	100%	N=327
Fire prevention and education	14%	N=39	48%	N=137	30%	N=85	8%	N=21	100%	N=282
Traffic enforcement	8%	N=26	29%	N=99	32%	N=110	32%	N=110	100%	N=344

The National Citizen Survey™

Please rate the quality of each of the following services in Billings:	Excellent		Good		Fair		Poor		Total	
Street repair	4%	N=16	29%	N=107	36%	N=136	31%	N=115	100%	N=374
Street cleaning	7%	N=28	43%	N=160	36%	N=133	14%	N=54	100%	N=375
Street lighting	8%	N=31	41%	N=154	33%	N=124	18%	N=67	100%	N=376
Snow removal	10%	N=37	28%	N=106	37%	N=142	25%	N=94	100%	N=378
Sidewalk maintenance	6%	N=22	29%	N=106	41%	N=149	24%	N=87	100%	N=364
Traffic signal timing	8%	N=30	36%	N=136	33%	N=123	23%	N=84	100%	N=372
Bus or transit services	12%	N=21	29%	N=53	36%	N=65	23%	N=41	100%	N=180
Garbage collection	31%	N=118	54%	N=202	12%	N=47	3%	N=10	100%	N=377
Recycling	9%	N=30	30%	N=98	27%	N=91	34%	N=113	100%	N=333
Yard waste pick-up	26%	N=80	43%	N=135	22%	N=69	9%	N=30	100%	N=314
Storm drainage	8%	N=28	42%	N=141	36%	N=122	13%	N=45	100%	N=336
Drinking water	24%	N=91	51%	N=190	20%	N=74	5%	N=19	100%	N=373
Sewer services	23%	N=79	51%	N=177	23%	N=81	2%	N=9	100%	N=346
Utility billing	14%	N=52	48%	N=175	33%	N=120	4%	N=16	100%	N=363
City parks	22%	N=82	53%	N=196	22%	N=80	3%	N=12	100%	N=371
Recreation programs or classes	14%	N=33	53%	N=128	28%	N=67	6%	N=14	100%	N=243
Recreation centers or facilities	12%	N=31	46%	N=119	34%	N=88	8%	N=21	100%	N=257
Land use, planning and zoning	6%	N=17	29%	N=79	46%	N=127	20%	N=54	100%	N=277
Code enforcement (weeds, abandoned buildings, etc.)	5%	N=14	19%	N=57	47%	N=142	29%	N=88	100%	N=301
Animal control	6%	N=20	43%	N=134	36%	N=112	14%	N=43	100%	N=308
Economic development	11%	N=35	43%	N=134	36%	N=111	10%	N=31	100%	N=311
Health services	32%	N=111	43%	N=148	21%	N=73	5%	N=16	100%	N=348
Public library services	31%	N=91	46%	N=134	20%	N=59	3%	N=9	100%	N=293
Public information services	10%	N=30	43%	N=123	39%	N=112	8%	N=22	100%	N=287
Cable television	9%	N=26	34%	N=104	29%	N=88	29%	N=91	100%	N=309
Emergency preparedness (services that prepare the community for natural disasters or other emergency situations)	9%	N=24	38%	N=103	42%	N=115	12%	N=33	100%	N=276
Preservation of natural areas such as open space, farmlands and greenbelts	10%	N=29	34%	N=102	39%	N=117	17%	N=50	100%	N=298
Billings open space	10%	N=31	34%	N=109	41%	N=132	14%	N=46	100%	N=318
City-sponsored special events	9%	N=26	43%	N=132	41%	N=124	8%	N=23	100%	N=305
Overall customer service by Billings employees (police, receptionists, planners, etc.)	11%	N=39	50%	N=169	31%	N=106	8%	N=27	100%	N=340

Table 11: Question 11

Overall, how would you rate the quality of the services provided by each of the following?	Excellent		Good		Fair		Poor		Total	
The City of Billings	13%	N=49	52%	N=193	30%	N=110	5%	N=19	100%	N=370
The Federal Government	6%	N=20	31%	N=107	36%	N=125	27%	N=96	100%	N=348
The State Government	5%	N=19	39%	N=135	46%	N=158	10%	N=36	100%	N=347
Yellowstone County Government	9%	N=30	45%	N=156	35%	N=122	10%	N=36	100%	N=345

The National Citizen Survey™

Table 12: Question 12

Please rate the following categories of Billings government performance:	Excellent		Good		Fair		Poor		Total	
The value of services for the taxes paid to Billings	5%	N=17	39%	N=137	39%	N=138	17%	N=61	100%	N=353
The overall direction that Billings is taking	8%	N=29	44%	N=157	34%	N=122	14%	N=52	100%	N=360
The job Billings government does at welcoming citizen involvement	9%	N=28	34%	N=104	39%	N=120	18%	N=54	100%	N=307
Overall confidence in Billings government	6%	N=22	35%	N=125	44%	N=158	15%	N=56	100%	N=360
Generally acting in the best interest of the community	8%	N=28	40%	N=141	37%	N=132	15%	N=55	100%	N=356
Being honest	8%	N=27	38%	N=129	40%	N=136	14%	N=48	100%	N=341
Treating all residents fairly	8%	N=26	37%	N=126	35%	N=119	20%	N=68	100%	N=340

Table 13: Question 13

Please rate how important, if at all, you think it is for the Billings community to focus on each of the following in the coming two years:	Essential		Very important		Somewhat important		Not at all important		Total	
Overall feeling of safety in Billings	50%	N=194	41%	N=161	8%	N=31	1%	N=3	100%	N=388
Overall ease of getting to the places you usually have to visit	22%	N=85	49%	N=188	27%	N=106	2%	N=8	100%	N=387
Quality of overall natural environment in Billings	25%	N=97	51%	N=198	22%	N=87	2%	N=7	100%	N=388
Overall "built environment" of Billings (including overall design, buildings, parks and transportation systems)	28%	N=109	43%	N=166	28%	N=110	1%	N=3	100%	N=388
Health and wellness opportunities in Billings	35%	N=135	46%	N=178	18%	N=69	1%	N=5	100%	N=388
Overall opportunities for education and enrichment	40%	N=154	40%	N=156	20%	N=76	1%	N=3	100%	N=388
Overall economic health of Billings	47%	N=182	42%	N=163	10%	N=39	0%	N=2	100%	N=385
Sense of community	30%	N=117	47%	N=183	20%	N=77	3%	N=10	100%	N=387

Table 14: Question 14A

Please rate how important, if at all, it is for the City to create a citizen committee:	Percent	Number
Essential	26%	N=86
Very Important	37%	N=120
Somewhat important	29%	N=96
Not at all important	8%	N=27
Total	100%	N=328

Table 15: Question 14B

Please select how important it would be, if at all, for the committee to review the current Charter articles:	Essential		Very Important		Somewhat important		Not at all important		Total	
Property tax limit of 74 mills for general purposes	18%	N=46	53%	N=133	24%	N=60	4%	N=10	100%	N=250
Five City wards, each represented by two Councilmembers	14%	N=41	48%	N=139	32%	N=92	6%	N=18	100%	N=290
Mayor elected at-large and votes on all issues	24%	N=73	51%	N=155	21%	N=63	5%	N=14	100%	N=305
Limit of two (2) consecutive four (4) year terms	30%	N=94	42%	N=133	20%	N=63	9%	N=29	100%	N=319
Council members must live in the Wards they represent	57%	N=192	31%	N=103	10%	N=32	2%	N=8	100%	N=335
City Administrator must be appointed to manage day-to-day city operations	29%	N=90	49%	N=152	13%	N=39	8%	N=26	100%	N=306
Mayor and Council have no administrative duties, cannot hire or remove City employees and must deal with employees through the City Administrator	26%	N=73	41%	N=116	23%	N=65	11%	N=31	100%	N=285
Boards and Commissions are advisory only and members may not be compensated	29%	N=82	36%	N=102	29%	N=83	7%	N=19	100%	N=286

The National Citizen Survey™

Table 16: Question 15

How important, if at all, do you believe it is for the City of Billings to have a Public Information Officer?	Percent	Number
Essential	19%	N=61
Very Important	32%	N=102
Somewhat important	35%	N=111
Not at all important	14%	N=44
Total	100%	N=318

Table 17: Question 16

Please indicate how important, if at all, it is for the City to contact you about the following types of information, news or announcements:	Essential		Very Important		Somewhat important		Not at all important		Total	
City and employee awards or accomplishments	5%	N=17	15%	N=56	45%	N=165	35%	N=128	100%	N=366
Responses to text or email questions/concerns within 24 hours	22%	N=80	51%	N=184	23%	N=82	5%	N=18	100%	N=364
Downtown events	13%	N=50	38%	N=144	36%	N=133	13%	N=48	100%	N=374
Street closures, traffic accident locations or other current transportation news	31%	N=117	48%	N=183	18%	N=69	3%	N=10	100%	N=379
Elected officials' opinions on City issues or projects	18%	N=64	44%	N=159	33%	N=121	5%	N=20	100%	N=364
Police and Fire media announcements	30%	N=115	45%	N=172	21%	N=79	3%	N=12	100%	N=378
Council meeting results	16%	N=60	41%	N=155	36%	N=136	6%	N=24	100%	N=373
Zoning or other land use changes that may affect your neighborhood	43%	N=163	42%	N=159	13%	N=50	2%	N=8	100%	N=380
How the City sets its service rates	26%	N=96	47%	N=174	22%	N=80	6%	N=22	100%	N=371
Explaining Montana property tax system	28%	N=103	43%	N=161	23%	N=86	6%	N=24	100%	N=375

Table 18: Question 17

In Montana, property tax is the only local government tax that voters are allowed to increase. To what extent would you support or oppose this restriction being lifted in Billings so that residents could vote on a 1%-4% selective sales tax, how to spend those taxes and that would reduce property taxes?	Percent	Number
Strongly support	34%	N=115
Somewhat support	24%	N=83
Somewhat oppose	10%	N=34
Strongly oppose	32%	N=111
Total	100%	N=343

Table 19: Question D1

How often, if at all, do you do each of the following, considering all of the times you could?	Never		Rarely		Sometimes		Usually		Always		Total	
Recycle at home	15%	N=59	14%	N=53	26%	N=101	24%	N=92	22%	N=84	100%	N=388
Purchase goods or services from a business located in Billings	0%	N=1	1%	N=3	10%	N=39	54%	N=209	35%	N=136	100%	N=389
Eat at least 5 portions of fruits and vegetables a day	4%	N=14	17%	N=67	40%	N=155	29%	N=112	11%	N=41	100%	N=390
Participate in moderate or vigorous physical activity	2%	N=7	11%	N=41	35%	N=137	36%	N=141	16%	N=62	100%	N=388
Read or watch local news (via television, paper, computer, etc.)	3%	N=10	11%	N=44	15%	N=59	29%	N=113	42%	N=163	100%	N=390
Vote in local elections	8%	N=30	8%	N=32	8%	N=29	19%	N=74	58%	N=226	100%	N=391

The National Citizen Survey™

Table 20: Question D2

Would you say that in general your health is:	Percent	Number
Excellent	17%	N=65
Very good	40%	N=155
Good	34%	N=134
Fair	8%	N=32
Poor	1%	N=4
Total	100%	N=390

Table 21: Question D3

What impact, if any, do you think the economy will have on your family income in the next 6 months? Do you think the impact will be:	Percent	Number
Very positive	7%	N=28
Somewhat positive	21%	N=82
Neutral	46%	N=182
Somewhat negative	20%	N=78
Very negative	6%	N=22
Total	100%	N=391

Table 22: Question D4

What is your employment status?	Percent	Number
Working full time for pay	63%	N=247
Working part time for pay	9%	N=35
Unemployed, looking for paid work	3%	N=10
Unemployed, not looking for paid work	3%	N=12
Fully retired	22%	N=85
Total	100%	N=390

Table 23: Question D5

Do you work inside the boundaries of Billings?	Percent	Number
Yes, outside the home	69%	N=260
Yes, from home	4%	N=15
No	27%	N=102
Total	100%	N=377

Table 24: Question D6

How many years have you lived in Billings?	Percent	Number
Less than 2 years	7%	N=28
2 to 5 years	17%	N=67
6 to 10 years	10%	N=39
11 to 20 years	16%	N=64
More than 20 years	49%	N=193
Total	100%	N=392

The National Citizen Survey™

Table 25: Question D7

Which best describes the building you live in?	Percent	Number
One family house detached from any other houses	67%	N=261
Building with two or more homes (duplex, townhome, apartment or condominium)	27%	N=106
Mobile home	3%	N=12
Other	2%	N=9
Total	100%	N=389

Table 26: Question D8

Is this house, apartment or mobile home...	Percent	Number
Rented	36%	N=139
Owned	64%	N=249
Total	100%	N=388

Table 27: Question D9

About how much is your monthly housing cost for the place you live (including rent, mortgage payment, property tax, property insurance and homeowners' association (HOA) fees)?	Percent	Number
Less than \$300 per month	7%	N=28
\$300 to \$599 per month	19%	N=74
\$600 to \$999 per month	26%	N=101
\$1,000 to \$1,499 per month	26%	N=100
\$1,500 to \$2,499 per month	17%	N=65
\$2,500 or more per month	5%	N=17
Total	100%	N=384

Table 28: Question D10

Do any children 17 or under live in your household?	Percent	Number
No	71%	N=277
Yes	29%	N=113
Total	100%	N=390

Table 29: Question D11

Are you or any other members of your household aged 65 or older?	Percent	Number
No	72%	N=280
Yes	28%	N=111
Total	100%	N=391

The National Citizen Survey™

Table 30: Question D12

How much do you anticipate your household's total income before taxes will be for the current year? (Please include in your total income money from all sources for all persons living in your household.)	Percent	Number
Less than \$25,000	21%	N=79
\$25,000 to \$49,999	25%	N=95
\$50,000 to \$99,999	30%	N=113
\$100,000 to \$149,999	14%	N=54
\$150,000 or more	10%	N=38
Total	100%	N=379

Table 31: Question D13

Are you Spanish, Hispanic or Latino?	Percent	Number
No, not Spanish, Hispanic or Latino	97%	N=375
Yes, I consider myself to be Spanish, Hispanic or Latino	3%	N=12
Total	100%	N=387

Table 32: Question D14

What is your race? (Mark one or more races to indicate what race(s) you consider yourself to be.)	Percent	Number
American Indian or Alaskan Native	4%	N=14
Asian, Asian Indian or Pacific Islander	3%	N=12
Black or African American	1%	N=5
White	95%	N=369
Other	3%	N=10

Total may exceed 100% as respondents could select more than one option.

Table 33: Question D15

In which category is your age?	Percent	Number
18 to 24 years	5%	N=18
25 to 34 years	26%	N=102
35 to 44 years	14%	N=53
45 to 54 years	20%	N=79
55 to 64 years	13%	N=50
65 to 74 years	12%	N=47
75 years or older	11%	N=42
Total	100%	N=391

Table 34: Question D16

What is your sex?	Percent	Number
Female	52%	N=204
Male	48%	N=187
Total	100%	N=391

The National Citizen Survey™

Table 35: Question D17

Do you consider a cell phone or landline your primary telephone number?	Percent	Number
Cell	65%	N=250
Land line	19%	N=74
Both	16%	N=62
Total	100%	N=386

The National Citizen Survey™

Responses including “don’t know”

The following pages contain a complete set of responses to each question on the survey, including the “don’t know” responses. The percent of respondents giving a particular response is shown followed by the number of respondents (denoted with “N=”).

Table 36: Question 1

Please rate each of the following aspects of quality of life in Billings:	Excellent		Good		Fair		Poor		Don't know		Total	
Billings as a place to live	24%	N=94	51%	N=201	22%	N=87	2%	N=9	0%	N=1	100%	N=392
Your neighborhood as a place to live	32%	N=125	43%	N=167	19%	N=73	6%	N=25	0%	N=2	100%	N=392
Billings as a place to raise children	21%	N=81	41%	N=161	23%	N=91	5%	N=21	9%	N=37	100%	N=390
Billings as a place to work	17%	N=65	49%	N=189	21%	N=82	10%	N=39	3%	N=13	100%	N=388
Billings as a place to visit	15%	N=58	39%	N=151	32%	N=127	10%	N=41	4%	N=14	100%	N=391
Billings as a place to retire	15%	N=59	36%	N=137	24%	N=92	11%	N=42	14%	N=55	100%	N=385
The overall quality of life in Billings	16%	N=62	58%	N=224	22%	N=84	4%	N=17	0%	N=1	100%	N=389

Table 37: Question 2

Please rate each of the following characteristics as they relate to Billings as a whole:	Excellent		Good		Fair		Poor		Don't know		Total	
Overall feeling of safety in Billings	7%	N=29	48%	N=188	33%	N=129	11%	N=45	0%	N=2	100%	N=393
Overall ease of getting to the places you usually have to visit	18%	N=70	54%	N=212	22%	N=87	6%	N=23	0%	N=1	100%	N=393
Quality of overall natural environment in Billings	16%	N=63	48%	N=188	29%	N=115	5%	N=21	1%	N=4	100%	N=391
Overall "built environment" of Billings (including overall design, buildings, parks and transportation systems)	6%	N=24	37%	N=144	42%	N=164	15%	N=57	1%	N=2	100%	N=392
Health and wellness opportunities in Billings	30%	N=116	47%	N=183	17%	N=66	5%	N=19	2%	N=7	100%	N=391
Overall opportunities for education and enrichment	17%	N=65	44%	N=173	28%	N=109	8%	N=32	4%	N=14	100%	N=392
Overall economic health of Billings	10%	N=40	48%	N=186	31%	N=120	6%	N=23	6%	N=22	100%	N=391
Sense of community	9%	N=34	39%	N=154	37%	N=145	13%	N=51	1%	N=6	100%	N=389
Overall image or reputation of Billings	11%	N=44	43%	N=167	33%	N=128	12%	N=45	1%	N=5	100%	N=389

Table 38: Question 3

Please indicate how likely or unlikely you are to do each of the following:	Very likely		Somewhat likely		Somewhat unlikely		Very unlikely		Don't know		Total	
Recommend living in Billings to someone who asks	35%	N=138	46%	N=179	10%	N=41	7%	N=28	1%	N=3	100%	N=389
Remain in Billings for the next five years	60%	N=233	22%	N=85	10%	N=40	6%	N=24	2%	N=8	100%	N=389

Table 39: Question 4

Please rate how safe or unsafe you feel:	Very safe		Somewhat safe		Neither safe nor unsafe		Somewhat unsafe		Very unsafe		Don't know		Total	
In your neighborhood during the day	63%	N=245	30%	N=116	3%	N=11	4%	N=16	1%	N=3	0%	N=0	100%	N=392
In Billings' downtown/commercial area during the day	23%	N=91	44%	N=173	12%	N=47	15%	N=59	4%	N=16	1%	N=5	100%	N=392

Table 40: Question 5

Please rate each of the following characteristics as they relate to Billings as a whole:	Excellent		Good		Fair		Poor		Don't know		Total	
Traffic flow on major streets	5%	N=21	38%	N=149	40%	N=159	16%	N=63	0%	N=1	100%	N=393
Ease of public parking	7%	N=26	32%	N=126	41%	N=161	18%	N=72	2%	N=8	100%	N=393
Ease of travel by car in Billings	16%	N=63	48%	N=189	28%	N=111	7%	N=26	1%	N=4	100%	N=392
Ease of travel by public transportation in Billings	3%	N=12	13%	N=50	18%	N=70	24%	N=92	43%	N=166	100%	N=389

The National Citizen Survey™

Please rate each of the following characteristics as they relate to Billings as a whole:	Excellent		Good		Fair		Poor		Don't know		Total	
Ease of travel by bicycle in Billings	3%	N=13	22%	N=84	28%	N=110	18%	N=71	28%	N=110	100%	N=388
Ease of walking in Billings	11%	N=43	40%	N=154	31%	N=119	14%	N=52	5%	N=19	100%	N=387
Availability of paths and walking trails	13%	N=51	38%	N=147	27%	N=103	11%	N=42	11%	N=43	100%	N=386
Air quality	10%	N=40	53%	N=205	24%	N=93	11%	N=44	1%	N=5	100%	N=387
Cleanliness of Billings	5%	N=21	34%	N=133	41%	N=160	20%	N=76	0%	N=0	100%	N=390
Overall appearance of Billings	6%	N=23	42%	N=162	40%	N=153	13%	N=49	0%	N=0	100%	N=387
Public places where people want to spend time	7%	N=27	42%	N=163	36%	N=139	11%	N=41	4%	N=17	100%	N=386
Variety of housing options	8%	N=32	37%	N=144	30%	N=118	16%	N=61	9%	N=33	100%	N=389
Availability of affordable quality housing	5%	N=18	24%	N=92	36%	N=139	24%	N=94	12%	N=46	100%	N=389
Fitness opportunities (including exercise classes and paths or trails, etc.)	19%	N=74	47%	N=182	22%	N=85	5%	N=19	7%	N=27	100%	N=387
Recreational opportunities	14%	N=53	43%	N=166	31%	N=122	9%	N=35	3%	N=13	100%	N=389
Availability of affordable quality food	17%	N=68	46%	N=179	29%	N=111	7%	N=28	1%	N=2	100%	N=389
Availability of affordable quality health care	24%	N=94	40%	N=156	19%	N=73	11%	N=41	7%	N=26	100%	N=390
Availability of preventive health services	24%	N=94	39%	N=150	23%	N=89	6%	N=21	8%	N=32	100%	N=387
Availability of affordable quality mental health care	8%	N=31	20%	N=78	21%	N=79	14%	N=53	38%	N=145	100%	N=387

Table 41: Question 6

Please rate each of the following characteristics as they relate to Billings as a whole:	Excellent		Good		Fair		Poor		Don't know		Total	
Availability of affordable quality child care/preschool	4%	N=17	19%	N=74	18%	N=71	7%	N=29	51%	N=197	100%	N=387
K-12 education	13%	N=49	35%	N=134	25%	N=96	4%	N=16	24%	N=91	100%	N=387
Adult educational opportunities	11%	N=43	38%	N=146	29%	N=110	3%	N=12	20%	N=76	100%	N=387
Opportunities to attend cultural/arts/music activities	14%	N=54	47%	N=180	25%	N=94	8%	N=29	7%	N=26	100%	N=384
Opportunities to participate in religious or spiritual events and activities	23%	N=86	48%	N=185	13%	N=48	4%	N=15	13%	N=49	100%	N=383
Employment opportunities	9%	N=33	43%	N=166	28%	N=108	12%	N=46	8%	N=29	100%	N=382
Shopping opportunities	18%	N=71	46%	N=179	27%	N=106	8%	N=32	0%	N=1	100%	N=388
Cost of living in Billings	6%	N=24	34%	N=133	45%	N=173	14%	N=55	1%	N=2	100%	N=387
Overall quality of business and service establishments in Billings	12%	N=47	51%	N=198	30%	N=116	5%	N=18	2%	N=8	100%	N=386
Vibrant downtown/commercial area	6%	N=24	34%	N=131	42%	N=160	13%	N=50	5%	N=20	100%	N=385
Overall quality of new development in Billings	7%	N=25	44%	N=169	35%	N=136	6%	N=23	9%	N=34	100%	N=387
Opportunities to participate in social events and activities	14%	N=55	47%	N=182	26%	N=102	7%	N=27	5%	N=21	100%	N=388
Opportunities to volunteer	20%	N=76	45%	N=173	20%	N=76	3%	N=12	12%	N=45	100%	N=382
Opportunities to participate in community matters	14%	N=52	41%	N=157	27%	N=103	8%	N=29	11%	N=41	100%	N=381
Openness and acceptance of the community toward people of diverse backgrounds	10%	N=36	30%	N=112	30%	N=111	22%	N=82	9%	N=34	100%	N=375
Neighborliness of residents in Billings	10%	N=37	41%	N=160	36%	N=140	12%	N=45	1%	N=5	100%	N=386

Table 42: Question 7

Please indicate whether or not you have done each of the following in the last 12 months.	No		Yes		Total	
Made efforts to conserve water	24%	N=93	76%	N=295	100%	N=388
Made efforts to make your home more energy efficient	24%	N=92	76%	N=296	100%	N=388
Observed a code violation or other hazard in Billings	37%	N=141	63%	N=245	100%	N=386
Household member was a victim of a crime in Billings	79%	N=308	21%	N=80	100%	N=387
Reported a crime to the police in Billings	63%	N=244	37%	N=143	100%	N=387

The National Citizen Survey™

Please indicate whether or not you have done each of the following in the last 12 months.	No		Yes		Total	
Stocked supplies in preparation for an emergency	69%	N=266	31%	N=122	100%	N=387
Campaigned or advocated for an issue, cause or candidate	76%	N=296	24%	N=91	100%	N=388
Contacted the City of Billings (in-person, phone, email or web) for help or information	64%	N=250	36%	N=139	100%	N=389
Contacted Billings elected officials (in-person, phone, email or web) to express your opinion	83%	N=321	17%	N=67	100%	N=389

Table 43: Question 8

In the last 12 months, about how many times, if at all, have you or other household members done each of the following in Billings?	2 times a week or more		2-4 times a month		Once a month or less		Not at all		Total	
Used Billings recreation centers or their services	11%	N=43	16%	N=61	33%	N=126	40%	N=152	100%	N=382
Visited a neighborhood park or City park	21%	N=81	30%	N=117	38%	N=146	11%	N=44	100%	N=388
Used Billings public libraries or their services	6%	N=21	17%	N=66	33%	N=128	44%	N=169	100%	N=384
Participated in religious or spiritual activities in Billings	17%	N=64	24%	N=91	17%	N=67	42%	N=162	100%	N=385
Attended a City-sponsored event	1%	N=5	9%	N=33	45%	N=174	45%	N=173	100%	N=385
Used bus, rail, subway or other public transportation instead of driving	4%	N=14	3%	N=11	4%	N=17	89%	N=345	100%	N=388
Carpooled with other adults or children instead of driving alone	9%	N=35	16%	N=63	17%	N=67	57%	N=220	100%	N=385
Walked or biked instead of driving	17%	N=65	14%	N=55	24%	N=95	44%	N=172	100%	N=387
Volunteered your time to some group/activity in Billings	13%	N=51	14%	N=54	25%	N=95	48%	N=186	100%	N=387
Participated in a club	8%	N=31	13%	N=51	17%	N=67	62%	N=240	100%	N=388
Talked to or visited with your immediate neighbors	47%	N=182	36%	N=140	13%	N=51	4%	N=16	100%	N=388
Done a favor for a neighbor	24%	N=92	29%	N=111	33%	N=129	15%	N=57	100%	N=388

Table 44: Question 9

Thinking about local public meetings (of local elected officials like City Council or County Commissioners, advisory boards, town halls, HOA, neighborhood watch, etc.), in the last 12 months, about how many times, if at all, have you or other household members attended or watched a local public meeting?	2 times a week or more		2-4 times a month		Once a month or less		Not at all		Total	
Attended a local public meeting	1%	N=3	3%	N=11	15%	N=56	82%	N=314	100%	N=383
Watched (online or on television) a local public meeting	3%	N=10	8%	N=33	26%	N=101	63%	N=240	100%	N=384

Table 45: Question 10

Please rate the quality of each of the following services in Billings:	Excellent		Good		Fair		Poor		Don't know		Total	
Police services	18%	N=69	39%	N=150	26%	N=98	11%	N=41	6%	N=24	100%	N=382
Fire services	27%	N=105	46%	N=176	11%	N=43	1%	N=4	14%	N=56	100%	N=384
Ambulance or emergency medical services	25%	N=96	43%	N=166	10%	N=37	3%	N=10	20%	N=75	100%	N=384
Crime prevention	5%	N=17	31%	N=120	33%	N=126	17%	N=65	14%	N=55	100%	N=382
Fire prevention and education	10%	N=39	36%	N=137	22%	N=85	6%	N=21	26%	N=101	100%	N=383
Traffic enforcement	7%	N=26	26%	N=99	29%	N=110	29%	N=110	10%	N=38	100%	N=383
Street repair	4%	N=16	28%	N=107	36%	N=136	30%	N=115	2%	N=10	100%	N=383
Street cleaning	7%	N=28	42%	N=160	35%	N=133	14%	N=54	2%	N=8	100%	N=383
Street lighting	8%	N=31	40%	N=154	32%	N=124	18%	N=67	2%	N=6	100%	N=382
Snow removal	10%	N=37	28%	N=106	37%	N=142	25%	N=94	1%	N=3	100%	N=382
Sidewalk maintenance	6%	N=22	28%	N=106	39%	N=149	23%	N=87	5%	N=20	100%	N=384
Traffic signal timing	8%	N=30	35%	N=136	32%	N=123	22%	N=84	3%	N=10	100%	N=382

The National Citizen Survey™

Please rate the quality of each of the following services in Billings:	Excellent		Good		Fair		Poor		Don't know		Total	
Bus or transit services	6%	N=21	14%	N=53	17%	N=65	11%	N=41	52%	N=198	100%	N=378
Garbage collection	31%	N=118	53%	N=202	12%	N=47	3%	N=10	1%	N=3	100%	N=380
Recycling	8%	N=30	26%	N=98	24%	N=91	30%	N=113	13%	N=50	100%	N=382
Yard waste pick-up	21%	N=80	35%	N=135	18%	N=69	8%	N=30	18%	N=69	100%	N=383
Storm drainage	7%	N=28	37%	N=141	32%	N=122	12%	N=45	12%	N=46	100%	N=383
Drinking water	24%	N=91	50%	N=190	19%	N=74	5%	N=19	3%	N=10	100%	N=383
Sewer services	21%	N=79	46%	N=177	21%	N=81	2%	N=9	10%	N=38	100%	N=384
Utility billing	14%	N=52	46%	N=175	31%	N=120	4%	N=16	5%	N=21	100%	N=383
City parks	21%	N=82	51%	N=196	21%	N=80	3%	N=12	3%	N=13	100%	N=384
Recreation programs or classes	9%	N=33	34%	N=128	18%	N=67	4%	N=14	36%	N=136	100%	N=379
Recreation centers or facilities	8%	N=31	31%	N=119	23%	N=88	5%	N=21	32%	N=121	100%	N=379
Land use, planning and zoning	4%	N=17	21%	N=79	33%	N=127	14%	N=54	27%	N=103	100%	N=380
Code enforcement (weeds, abandoned buildings, etc.)	4%	N=14	15%	N=57	38%	N=142	23%	N=88	20%	N=77	100%	N=377
Animal control	5%	N=20	35%	N=134	29%	N=112	11%	N=43	19%	N=73	100%	N=381
Economic development	9%	N=35	35%	N=134	29%	N=111	8%	N=31	18%	N=68	100%	N=380
Health services	29%	N=111	39%	N=148	19%	N=73	4%	N=16	9%	N=34	100%	N=382
Public library services	24%	N=91	35%	N=134	16%	N=59	2%	N=9	23%	N=88	100%	N=382
Public information services	8%	N=30	33%	N=123	30%	N=112	6%	N=22	24%	N=90	100%	N=377
Cable television	7%	N=26	27%	N=104	23%	N=88	24%	N=91	19%	N=71	100%	N=380
Emergency preparedness (services that prepare the community for natural disasters or other emergency situations)	6%	N=24	27%	N=103	30%	N=115	9%	N=33	27%	N=103	100%	N=378
Preservation of natural areas such as open space, farmlands and greenbelts	8%	N=29	27%	N=102	31%	N=117	13%	N=50	21%	N=81	100%	N=379
Billings open space	8%	N=31	29%	N=109	35%	N=132	12%	N=46	14%	N=53	100%	N=371
City-sponsored special events	7%	N=26	35%	N=132	33%	N=124	6%	N=23	19%	N=70	100%	N=375
Overall customer service by Billings employees (police, receptionists, planners, etc.)	10%	N=39	45%	N=169	28%	N=106	7%	N=27	10%	N=36	100%	N=376

Table 46: Question 11

Overall, how would you rate the quality of the services provided by each of the following?	Excellent		Good		Fair		Poor		Don't know		Total	
The City of Billings	13%	N=49	51%	N=193	29%	N=110	5%	N=19	3%	N=11	100%	N=381
The Federal Government	5%	N=20	28%	N=107	33%	N=125	25%	N=96	9%	N=34	100%	N=381
The State Government	5%	N=19	35%	N=135	41%	N=158	9%	N=36	9%	N=34	100%	N=381
Yellowstone County Government	8%	N=30	41%	N=156	32%	N=122	9%	N=36	10%	N=37	100%	N=381

Table 47: Question 12

Please rate the following categories of Billings government performance:	Excellent		Good		Fair		Poor		Don't know		Total	
The value of services for the taxes paid to Billings	5%	N=17	36%	N=137	36%	N=138	16%	N=61	8%	N=29	100%	N=382
The overall direction that Billings is taking	8%	N=29	41%	N=157	32%	N=122	14%	N=52	6%	N=22	100%	N=382
The job Billings government does at welcoming citizen involvement	7%	N=28	27%	N=104	32%	N=120	14%	N=54	19%	N=74	100%	N=380
Overall confidence in Billings government	6%	N=22	33%	N=125	42%	N=158	15%	N=56	5%	N=18	100%	N=379
Generally acting in the best interest of the community	7%	N=28	37%	N=141	35%	N=132	14%	N=55	6%	N=25	100%	N=380
Being honest	7%	N=27	34%	N=129	36%	N=136	13%	N=48	10%	N=36	100%	N=377
Treating all residents fairly	7%	N=26	33%	N=126	31%	N=119	18%	N=68	11%	N=41	100%	N=381

The National Citizen Survey™

Table 48: Question 13

Please rate how important, if at all, you think it is for the Billings community to focus on each of the following in the coming two years:	Essential		Very important		Somewhat important		Not at all important		Total	
Overall feeling of safety in Billings	50%	N=194	41%	N=161	8%	N=31	1%	N=3	100%	N=388
Overall ease of getting to the places you usually have to visit	22%	N=85	49%	N=188	27%	N=106	2%	N=8	100%	N=387
Quality of overall natural environment in Billings	25%	N=97	51%	N=198	22%	N=87	2%	N=7	100%	N=388
Overall "built environment" of Billings (including overall design, buildings, parks and transportation systems)	28%	N=109	43%	N=166	28%	N=110	1%	N=3	100%	N=388
Health and wellness opportunities in Billings	35%	N=135	46%	N=178	18%	N=69	1%	N=5	100%	N=388
Overall opportunities for education and enrichment	40%	N=154	40%	N=156	20%	N=76	1%	N=3	100%	N=388
Overall economic health of Billings	47%	N=182	42%	N=163	10%	N=39	0%	N=2	100%	N=385
Sense of community	30%	N=117	47%	N=183	20%	N=77	3%	N=10	100%	N=387

Table 49: Question 14A

Please rate how important, if at all, it is for the City to create a citizen committee:	Percent	Number
Essential	23%	N=86
Very Important	32%	N=120
Somewhat important	25%	N=96
Not at all important	7%	N=27
Don't know	13%	N=50
Total	100%	N=378

Table 50: Question 14B

Please select how important it would be, if at all, for the committee to review the current Charter articles:	Essential		Very Important		Somewhat important		Not at all important		Don't know		Total	
Property tax limit of 74 mills for general purposes	12%	N=46	36%	N=133	16%	N=60	3%	N=10	33%	N=123	100%	N=374
Five City wards, each represented by two Councilmembers	11%	N=41	37%	N=139	25%	N=92	5%	N=18	23%	N=86	100%	N=376
Mayor elected at-large and votes on all issues	19%	N=73	41%	N=155	17%	N=63	4%	N=14	19%	N=73	100%	N=378
Limit of two (2) consecutive four (4) year terms	25%	N=94	35%	N=133	17%	N=63	8%	N=29	16%	N=59	100%	N=377
Council members must live in the Wards they represent	52%	N=192	27%	N=103	9%	N=32	2%	N=8	10%	N=38	100%	N=374
City Administrator must be appointed to manage day-to-day city operations	25%	N=90	42%	N=152	11%	N=39	7%	N=26	15%	N=53	100%	N=360
Mayor and Council have no administrative duties, cannot hire or remove City employees and must deal with employees through the City Administrator	20%	N=73	31%	N=116	18%	N=65	8%	N=31	23%	N=83	100%	N=369
Boards and Commissions are advisory only and members may not be compensated	22%	N=82	27%	N=102	22%	N=83	5%	N=19	23%	N=88	100%	N=373

Table 51: Question 15

How important, if at all, do you believe it is for the City of Billings to have a Public Information Officer?	Percent	Number
Essential	16%	N=61
Very Important	27%	N=102
Somewhat important	29%	N=111
Not at all important	12%	N=44
Don't know	17%	N=64
Total	100%	N=381

The National Citizen Survey™

Table 52: Question 16

Please indicate how important, if at all, it is for the City to contact you about the following types of information, news or announcements:	Essential		Very Important		Somewhat important		Not at all important		Don't know		Total	
City and employee awards or accomplishments	4%	N=17	15%	N=56	43%	N=165	34%	N=128	4%	N=17	100%	N=383
Responses to text or email questions/concerns within 24 hours	21%	N=80	48%	N=184	21%	N=82	5%	N=18	5%	N=19	100%	N=383
Downtown events	13%	N=50	38%	N=144	35%	N=133	12%	N=48	2%	N=7	100%	N=381
Street closures, traffic accident locations or other current transportation news	30%	N=117	48%	N=183	18%	N=69	3%	N=10	2%	N=6	100%	N=385
Elected officials' opinions on City issues or projects	17%	N=64	42%	N=159	32%	N=121	5%	N=20	5%	N=18	100%	N=382
Police and Fire media announcements	30%	N=115	45%	N=172	20%	N=79	3%	N=12	2%	N=8	100%	N=385
Council meeting results	16%	N=60	40%	N=155	35%	N=136	6%	N=24	2%	N=9	100%	N=383
Zoning or other land use changes that may affect your neighborhood	42%	N=163	41%	N=159	13%	N=50	2%	N=8	1%	N=6	100%	N=386
How the City sets its service rates	25%	N=96	45%	N=174	21%	N=80	6%	N=22	3%	N=12	100%	N=383
Explaining Montana property tax system	27%	N=103	42%	N=161	22%	N=86	6%	N=24	2%	N=9	100%	N=383

Table 53: Question 17

In Montana, property tax is the only local government tax that voters are allowed to increase. To what extent would you support or oppose this restriction being lifted in Billings so that residents could vote on a 1%-4% selective sales tax, how to spend those taxes and that would reduce property taxes?	Percent	Number
Strongly support	34%	N=115
Somewhat support	24%	N=83
Somewhat oppose	10%	N=34
Strongly oppose	32%	N=111
Total	100%	N=343

Table 54: Question D1

How often, if at all, do you do each of the following, considering all of the times you could?	Never		Rarely		Sometimes		Usually		Always		Total	
Recycle at home	15%	N=59	14%	N=53	26%	N=101	24%	N=92	22%	N=84	100%	N=388
Purchase goods or services from a business located in Billings	0%	N=1	1%	N=3	10%	N=39	54%	N=209	35%	N=136	100%	N=389
Eat at least 5 portions of fruits and vegetables a day	4%	N=14	17%	N=67	40%	N=155	29%	N=112	11%	N=41	100%	N=390
Participate in moderate or vigorous physical activity	2%	N=7	11%	N=41	35%	N=137	36%	N=141	16%	N=62	100%	N=388
Read or watch local news (via television, paper, computer, etc.)	3%	N=10	11%	N=44	15%	N=59	29%	N=113	42%	N=163	100%	N=390
Vote in local elections	8%	N=30	8%	N=32	8%	N=29	19%	N=74	58%	N=226	100%	N=391

Table 55: Question D2

Would you say that in general your health is:	Percent	Number
Excellent	17%	N=65
Very good	40%	N=155
Good	34%	N=134
Fair	8%	N=32
Poor	1%	N=4
Total	100%	N=390

The National Citizen Survey™

Table 56: Question D3

What impact, if any, do you think the economy will have on your family income in the next 6 months? Do you think the impact will be:	Percent	Number
Very positive	7%	N=28
Somewhat positive	21%	N=82
Neutral	46%	N=182
Somewhat negative	20%	N=78
Very negative	6%	N=22
Total	100%	N=391

Table 57: Question D4

What is your employment status?	Percent	Number
Working full time for pay	63%	N=247
Working part time for pay	9%	N=35
Unemployed, looking for paid work	3%	N=10
Unemployed, not looking for paid work	3%	N=12
Fully retired	22%	N=85
Total	100%	N=390

Table 58: Question D5

Do you work inside the boundaries of Billings?	Percent	Number
Yes, outside the home	69%	N=260
Yes, from home	4%	N=15
No	27%	N=102
Total	100%	N=377

Table 59: Question D6

How many years have you lived in Billings?	Percent	Number
Less than 2 years	7%	N=28
2 to 5 years	17%	N=67
6 to 10 years	10%	N=39
11 to 20 years	16%	N=64
More than 20 years	49%	N=193
Total	100%	N=392

Table 60: Question D7

Which best describes the building you live in?	Percent	Number
One family house detached from any other houses	67%	N=261
Building with two or more homes (duplex, townhome, apartment or condominium)	27%	N=106
Mobile home	3%	N=12
Other	2%	N=9
Total	100%	N=389

The National Citizen Survey™

Table 61: Question D8

Is this house, apartment or mobile home...	Percent	Number
Rented	36%	N=139
Owned	64%	N=249
Total	100%	N=388

Table 62: Question D9

About how much is your monthly housing cost for the place you live (including rent, mortgage payment, property tax, property insurance and homeowners' association (HOA) fees)?	Percent	Number
Less than \$300 per month	7%	N=28
\$300 to \$599 per month	19%	N=74
\$600 to \$999 per month	26%	N=101
\$1,000 to \$1,499 per month	26%	N=100
\$1,500 to \$2,499 per month	17%	N=65
\$2,500 or more per month	5%	N=17
Total	100%	N=384

Table 63: Question D10

Do any children 17 or under live in your household?	Percent	Number
No	71%	N=277
Yes	29%	N=113
Total	100%	N=390

Table 64: Question D11

Are you or any other members of your household aged 65 or older?	Percent	Number
No	72%	N=280
Yes	28%	N=111
Total	100%	N=391

Table 65: Question D12

How much do you anticipate your household's total income before taxes will be for the current year? (Please include in your total income money from all sources for all persons living in your household.)	Percent	Number
Less than \$25,000	21%	N=79
\$25,000 to \$49,999	25%	N=95
\$50,000 to \$99,999	30%	N=113
\$100,000 to \$149,999	14%	N=54
\$150,000 or more	10%	N=38
Total	100%	N=379

Table 66: Question D13

Are you Spanish, Hispanic or Latino?	Percent	Number
No, not Spanish, Hispanic or Latino	97%	N=375
Yes, I consider myself to be Spanish, Hispanic or Latino	3%	N=12
Total	100%	N=387

The National Citizen Survey™

Table 67: Question D14

What is your race? (Mark one or more races to indicate what race(s) you consider yourself to be.)	Percent	Number
American Indian or Alaskan Native	4%	N=14
Asian, Asian Indian or Pacific Islander	3%	N=12
Black or African American	1%	N=5
White	95%	N=369
Other	3%	N=10

Total may exceed 100% as respondents could select more than one option.

Table 68: Question D15

In which category is your age?	Percent	Number
18 to 24 years	5%	N=18
25 to 34 years	26%	N=102
35 to 44 years	14%	N=53
45 to 54 years	20%	N=79
55 to 64 years	13%	N=50
65 to 74 years	12%	N=47
75 years or older	11%	N=42
Total	100%	N=391

Table 69: Question D16

What is your sex?	Percent	Number
Female	52%	N=204
Male	48%	N=187
Total	100%	N=391

Table 70: Question D17

Do you consider a cell phone or landline your primary telephone number?	Percent	Number
Cell	65%	N=250
Land line	19%	N=74
Both	16%	N=62
Total	100%	N=386

Appendix B: Benchmark Comparisons

Comparison Data

NRC's database of comparative resident opinion comprises resident perspectives gathered in surveys from over 500 communities whose residents evaluated the same kinds of topics on The National Citizen Survey™. The comparison evaluations are from the most recent survey completed in each community; most communities conduct surveys every year or in alternating years. NRC adds the latest results quickly upon survey completion, keeping the benchmark data fresh and relevant. The communities in the database represent a wide geographic and population range. The City of Billings chose to have comparisons made to the entire database and a subset of similar jurisdictions from the database (Western Region communities with populations between 85,000 and 115,000).

Interpreting the Results

Ratings are compared when there are at least five communities in which a similar question was asked. Where comparisons are available, four columns are provided in the table. The first column is Billings' "percent positive." The percent positive is the combination of the top two most positive response options (i.e., "excellent" and "good," "very safe" and "somewhat safe," "essential" and "very important," etc.), or, in the case of resident behaviors/participation, the percent positive represents the proportion of respondents indicating "yes" or participating in an activity at least once a month. The second column is the rank assigned to Billings' rating among communities where a similar question was asked. The third column is the number of communities that asked a similar question. The final column shows the comparison of Billings' rating to the benchmark.

In that final column, Billings' results are noted as being "higher" than the benchmark, "lower" than the benchmark or "similar" to the benchmark, meaning that the average rating given by Billings residents is statistically similar to or different (greater or lesser) than the benchmark. More extreme differences are noted as "much higher" or "much lower."

Benchmark Database Characteristics	
Region	Percent
New England	3%
Middle Atlantic	5%
East North Central	15%
West North Central	13%
South Atlantic	22%
East South Central	3%
West South Central	7%
Mountain	16%
Pacific	16%
Population	Percent
Less than 10,000	10%
10,000 to 24,999	22%
25,000 to 49,999	23%
50,000 to 99,999	22%
100,000 or more	23%

National Benchmark Comparisons

Table 71: Community Characteristics General

	Percent positive	Rank	Number of communities in comparison	Comparison to benchmark
The overall quality of life in Billings	74%	310	409	Similar
Overall image or reputation of Billings	55%	236	311	Lower
Billings as a place to live	75%	279	354	Similar
Your neighborhood as a place to live	75%	198	276	Similar
Billings as a place to raise children	68%	263	346	Similar
Billings as a place to retire	59%	223	326	Similar
Overall appearance of Billings	48%	278	318	Lower

Table 72: Community Characteristics by Facet

		Percent positive	Rank	Number of communities in comparison	Comparison to benchmark
Safety	Overall feeling of safety in Billings	55%	231	257	Lower
	In your neighborhood during the day	92%	205	316	Similar
	In Billings' downtown/commercial area during the day	68%	251	268	Lower
Mobility	Overall ease of getting to the places you usually have to visit	72%	115	176	Similar
	Availability of paths and walking trails	58%	178	277	Similar
	Ease of walking in Billings	53%	194	259	Similar
	Ease of travel by bicycle in Billings	35%	218	262	Lower
	Ease of travel by public transportation in Billings	27%	122	152	Lower
	Ease of travel by car in Billings	65%	144	267	Similar
	Ease of public parking	39%	108	144	Similar
	Traffic flow on major streets	43%	205	316	Similar
Natural Environment	Quality of overall natural environment in Billings	65%	195	244	Similar
	Cleanliness of Billings	39%	227	243	Much lower
	Air quality	64%	190	224	Lower
Built Environment	Overall "built environment" of Billings (including overall design, buildings, parks and transportation systems)	43%	141	167	Lower
	Overall quality of new development in Billings	55%	147	253	Similar
	Availability of affordable quality housing	32%	208	269	Similar
	Variety of housing options	50%	176	248	Similar
	Public places where people want to spend time	51%	127	161	Similar
	Overall economic health of Billings	61%	93	173	Similar
Economy	Vibrant downtown/commercial area	42%	82	155	Similar
	Overall quality of business and service establishments in Billings	65%	117	241	Similar
	Cost of living in Billings	41%	100	170	Similar
	Shopping opportunities	65%	102	263	Similar
	Employment opportunities	56%	47	280	Higher
	Billings as a place to visit	55%	121	183	Similar
	Billings as a place to work	68%	158	324	Similar
	Health and wellness opportunities in Billings	78%	55	170	Similar
	Availability of affordable quality mental health care	45%	74	146	Similar
	Availability of preventive health services	69%	64	207	Similar
Recreation and Wellness	Availability of affordable quality health care	69%	74	230	Similar
	Availability of affordable quality food	64%	122	207	Similar
	Recreational opportunities	58%	188	269	Similar
	Fitness opportunities (including exercise classes and paths or trails, etc.)	71%	81	162	Similar
	Overall opportunities for education and enrichment	63%	106	168	Similar

The National Citizen Survey™

		Percent positive	Rank	Number of communities in comparison	Comparison to benchmark
	Opportunities to participate in religious or spiritual events and activities	81%	91	179	Similar
	Opportunities to attend cultural/arts/music activities	65%	107	262	Similar
	Adult educational opportunities	61%	64	152	Similar
	K-12 education	62%	161	232	Similar
	Availability of affordable quality child care/preschool	48%	138	226	Similar
Community Engagement	Opportunities to participate in social events and activities	65%	103	229	Similar
	Neighborliness of Billings	52%	125	162	Similar
	Openness and acceptance of the community toward people of diverse backgrounds	43%	236	256	Lower
	Opportunities to participate in community matters	61%	134	243	Similar
	Opportunities to volunteer	74%	96	234	Similar

Table 73: Governance General

	Percent positive	Rank	Number of communities in comparison	Comparison to benchmark
Services provided by the City of Billings	65%	297	399	Similar
Overall customer service by Billings employees (police, receptionists, planners, etc.)	61%	298	332	Lower
Value of services for the taxes paid to Billings	44%	281	357	Similar
Overall direction that Billings is taking	52%	199	288	Similar
Job Billings government does at welcoming citizen involvement	43%	200	280	Similar
Overall confidence in Billings government	41%	117	169	Similar
Generally acting in the best interest of the community	48%	110	169	Similar
Being honest	46%	110	163	Similar
Treating all residents fairly	45%	118	168	Similar
Services provided by the Federal Government	37%	160	220	Similar

Table 74: Governance by Facet

		Percent positive	Rank	Number of communities in comparison	Comparison to benchmark
Safety	Police services	61%	375	406	Lower
	Fire services	86%	287	330	Similar
	Ambulance or emergency medical services	85%	264	313	Similar
	Crime prevention	42%	300	320	Lower
	Fire prevention and education	62%	234	255	Lower
	Animal control	50%	258	305	Similar
	Emergency preparedness (services that prepare the community for natural disasters or other emergency situations)	46%	215	253	Similar
Mobility	Traffic enforcement	36%	334	337	Much lower
	Street repair	33%	304	379	Lower
	Street cleaning	50%	229	289	Similar
	Street lighting	49%	237	281	Similar
	Snow removal	38%	247	265	Lower
	Sidewalk maintenance	35%	245	289	Lower
	Traffic signal timing	44%	174	229	Similar
Natural Environment	Bus or transit services	41%	143	195	Similar
	Garbage collection	85%	187	312	Similar
	Recycling	39%	319	323	Much lower
	Yard waste pick-up	69%	156	240	Similar
	Drinking water	75%	133	301	Similar

The National Citizen Survey™

		Percent positive	Rank	Number of communities in comparison	Comparison to benchmark
	Preservation of natural areas such as open space, farmlands and greenbelts	44%	200	231	Lower
	Billings open space	44%	127	154	Similar
	Storm drainage	50%	271	327	Similar
	Sewer services	74%	161	288	Similar
	Utility billing	63%	98	148	Similar
	Land use, planning and zoning	35%	212	267	Similar
	Code enforcement (weeds, abandoned buildings, etc.)	24%	296	329	Lower
Built Environment	Cable television	42%	150	172	Similar
Economy	Economic development	54%	112	255	Similar
	City parks	75%	216	294	Similar
	Recreation programs or classes	67%	219	311	Similar
Recreation and Wellness	Recreation centers or facilities	58%	198	254	Similar
	Health services	75%	35	179	Similar
Education and Enrichment	City-sponsored special events	52%	148	182	Similar
	Public library services	77%	236	308	Similar
Community Engagement	Public information services	53%	214	261	Similar

Table 75: Participation General

	Percent positive	Rank	Number of communities in comparison	Comparison to benchmark
Sense of community	49%	223	275	Similar
Recommend living in Billings to someone who asks	82%	173	252	Similar
Remain in Billings for the next five years	83%	138	245	Similar
Contacted Billings (in-person, phone, email or web) for help or information	36%	243	282	Lower

Table 76: Participation by Facet

		Percent positive	Rank	Number of communities in comparison	Comparison to benchmark
	Stocked supplies in preparation for an emergency	31%	95	149	Similar
	Did NOT report a crime to the police	63%	152	165	Lower
Safety	Household member was NOT a victim of a crime	79%	226	242	Similar
	Used bus, rail, subway or other public transportation instead of driving	11%	97	136	Lower
	Carpooled with other adults or children instead of driving alone	43%	74	157	Similar
Mobility	Walked or biked instead of driving	56%	81	162	Similar
	Made efforts to conserve water	76%	121	151	Similar
	Made efforts to make your home more energy efficient	76%	87	152	Similar
Natural Environment	Recycle at home	71%	196	227	Lower
	Did NOT observe a code violation or other hazard in Billings	37%	139	156	Lower
Built Environment	NOT experiencing housing costs stress	69%	113	223	Similar
	Purchase goods or services from a business located in Billings	99%	20	159	Similar
	Economy will have positive impact on income	28%	99	225	Similar
Economy	Work inside boundaries of Billings	73%	8	159	Much higher
Recreation and	Used Billings recreation centers or their	60%	75	213	Similar

The National Citizen Survey™

		Percent positive	Rank	Number of communities in comparison	Comparison to benchmark
Wellness	services				
	Visited a neighborhood park or City park	89%	61	245	Similar
	Eat at least 5 portions of fruits and vegetables a day	79%	120	155	Similar
	Participate in moderate or vigorous physical activity	88%	53	158	Similar
	In very good to excellent health	56%	114	158	Similar
Education and Enrichment	Used Billings public libraries or their services	56%	173	213	Similar
	Participated in religious or spiritual activities in Billings	58%	43	177	Higher
	Attended City-sponsored event	55%	72	162	Similar
	Campaigned or advocated for an issue, cause or candidate	24%	52	148	Similar
	Contacted Billings elected officials (in-person, phone, email or web) to express your opinion	17%	72	158	Similar
Community Engagement	Volunteered your time to some group/activity in Billings	52%	47	233	Higher
	Participated in a club	38%	34	212	Higher
	Talked to or visited with your immediate neighbors	96%	19	159	Similar
	Done a favor for a neighbor	85%	45	153	Similar
	Attended a local public meeting	18%	149	233	Similar
	Watched (online or on television) a local public meeting	37%	33	198	Higher
	Read or watch local news (via television, paper, computer, etc.)	86%	86	159	Similar
	Vote in local elections	84%	65	225	Similar

Communities included in national comparisons

The communities included in Billings' comparisons are listed on the following pages along with their population according to the 2010 Census.

Adams County, CO	441,603
Airway Heights city, WA	6,114
Albany city, OR	50,158
Albemarle County, VA.....	98,970
Albert Lea city, MN.....	18,016
Alexandria city, VA	139,966
Algonquin village, IL.....	30,046
Aliso Viejo city, CA	47,823
Altoona city, IA	14,541
American Canyon city, CA.....	19,454
Ames city, IA	58,965
Andover CDP, MA.....	8,762
Ankeny city, IA	45,582
Ann Arbor city, MI.....	113,934
Annapolis city, MD	38,394
Apache Junction city, AZ.....	35,840
Apple Valley town, CA	69,135
Arapahoe County, CO.....	572,003
Arkansas City city, AR.....	366
Arlington city, TX	365,438
Arlington County, VA	207,627
Arvada city, CO.....	106,433
Asheville city, NC	83,393
Ashland city, OR	20,078
Ashland town, VA.....	7,225
Aspen city, CO	6,658
Athens-Clarke County unified government	115,452
Auburn city, AL	53,380

Auburn city, WA.....	70,180
Augusta CCD, GA.....	134,777
Aurora city, CO	325,078
Austin city, TX	790,390
Bainbridge Island city, WA.....	23,025
Baltimore city, MD.....	620,961
Bartonville town, TX.....	1,469
Battle Creek city, MI.....	52,347
Bay City city, MI.....	34,932
Baytown city, TX.....	71,802
Bedford city, TX.....	46,979
Bedford town, MA	13,320
Bellevue city, WA	122,363
Bellingham city, WA	80,885
Beltrami County, MN	44,442
Benbrook city, TX.....	21,234
Bend city, OR.....	76,639
Bettendorf city, IA.....	33,217
Billings city, MT.....	104,170
Blaine city, MN.....	57,186
Bloomfield Hills city, MI	3,869
Bloomington city, MN	82,893
Blue Springs city, MO	52,575
Boise City city, ID	205,671
Boone County, KY	118,811
Boulder city, CO	97,385
Bowling Green city, KY	58,067
Bozeman city, MT	37,280

The National Citizen Survey™

Brentwood city, MO.....	8,055	Dallas city, TX.....	1,197,816
Brentwood city, TN	37,060	Danville city, KY.....	16,218
Brighton city, CO.....	33,352	Dardenne Prairie city, MO.....	11,494
Brighton city, MI	7,444	Davenport city, IA.....	99,685
Bristol city, TN	26,702	Davidson town, NC.....	10,944
Broken Arrow city, OK	98,850	Decatur city, GA.....	19,335
Brookfield city, WI	37,920	Del Mar city, CA	4,161
Brookline CDP, MA	58,732	Delaware city, OH	34,753
Broomfield city, CO	55,889	Delray Beach city, FL.....	60,522
Brownsburg town, IN	21,285	Denison city, TX.....	22,682
Burien city, WA.....	33,313	Denton city, TX.....	113,383
Burleson city, TX.....	36,690	Denver city, CO.....	600,158
Cabarrus County, NC.....	178,011	Derby city, KS.....	22,158
Cambridge city, MA.....	105,162	Des Peres city, MO.....	8,373
Cannon Beach city, OR.....	1,690	Destin city, FL.....	12,305
Canton city, SD.....	3,057	Dothan city, AL	65,496
Cape Coral city, FL	154,305	Douglas County, CO	285,465
Cape Girardeau city, MO.....	37,941	Dover city, NH	29,987
Carlisle borough, PA.....	18,682	Dublin city, CA	46,036
Carlsbad city, CA.....	105,328	Dublin city, OH	41,751
Carroll city, IA.....	10,103	Duluth city, MN.....	86,265
Cartersville city, GA.....	19,731	Duncanville city, TX.....	38,524
Cary town, NC	135,234	Durham city, NC	228,330
Casper city, WY	55,316	Durham County, NC	267,587
Castine town, ME	1,366	Eagle town, CO.....	6,508
Castle Pines North city, CO	10,360	East Baton Rouge Parish, LA.....	440,171
Castle Rock town, CO.....	48,231	East Grand Forks city, MN	8,601
Cedar Hill city, TX.....	45,028	East Lansing city, MI	48,579
Cedar Rapids city, IA.....	126,326	Eau Claire city, WI	65,883
Centennial city, CO.....	100,377	Eden Prairie city, MN.....	60,797
Chambersburg borough, PA.....	20,268	Edgerton city, KS	1,671
Chandler city, AZ	236,123	Edgewater city, CO	5,170
Chanhassen city, MN	22,952	Edina city, MN	47,941
Chapel Hill town, NC	57,233	Edmond city, OK.....	81,405
Charlotte city, NC.....	731,424	Edmonds city, WA.....	39,709
Charlotte County, FL	159,978	El Cerrito city, CA.....	23,549
Charlottesville city, VA.....	43,475	El Dorado County, CA.....	181,058
Chattanooga city, TN.....	167,674	El Paso city, TX.....	649,121
Chesterfield County, VA.....	316,236	Elk Grove city, CA	153,015
Chippewa Falls city, WI	13,661	Elk River city, MN.....	22,974
Citrus Heights city, CA.....	83,301	Elko New Market city, MN.....	4,110
Clackamas County, OR	375,992	Elmhurst city, IL.....	44,121
Clarendon Hills village, IL	8,427	Encinitas city, CA	59,518
Clayton city, MO	15,939	Englewood city, CO.....	30,255
Clearwater city, FL	107,685	Erie town, CO	18,135
Cleveland Heights city, OH	46,121	Escambia County, FL.....	297,619
Clinton city, SC	8,490	Estes Park town, CO.....	5,858
Clive city, IA	15,447	Fairview town, TX	7,248
Clovis city, CA.....	95,631	Farmington Hills city, MI.....	79,740
College Park city, MD	30,413	Fayetteville city, NC.....	200,564
College Station city, TX	93,857	Fishers town, IN	76,794
Colleyville city, TX	22,807	Flower Mound town, TX.....	64,669
Collinsville city, IL	25,579	Forest Grove city, OR	21,083
Columbia city, MO.....	108,500	Fort Collins city, CO.....	143,986
Columbia city, SC.....	129,272	Fort Smith city, AR.....	86,209
Columbia Falls city, MT.....	4,688	Fort Worth city, TX.....	741,206
Columbus city, WI.....	4,991	Fountain Hills town, AZ	22,489
Commerce City city, CO.....	45,913	Franklin city, TN.....	62,487
Concord city, CA	122,067	Fredericksburg city, VA.....	24,286
Concord town, MA.....	17,668	Fremont city, CA	214,089
Coon Rapids city, MN	61,476	Friendswood city, TX.....	35,805
Copperas Cove city, TX.....	32,032	Fruita city, CO.....	12,646
Coronado city, CA	18,912	Gahanna city, OH.....	33,248
Corvallis city, OR	54,462	Gaithersburg city, MD.....	59,933
Creve Coeur city, MO	17,833	Galveston city, TX.....	47,743
Cross Roads town, TX	1,563	Gardner city, KS.....	19,123
Dacono city, CO.....	4,152	Geneva city, NY	13,261
Dade City city, FL.....	6,437	Georgetown city, TX.....	47,400
Dakota County, MN.....	398,552	Gilbert town, AZ.....	208,453
Dallas city, OR	14,583	Gillette city, WY	29,087

The National Citizen Survey™

Glendora city, CA	50,073	La Mesa city, CA	57,065
Glenview village, IL	44,692	La Plata town, MD	8,753
Globe city, AZ	7,532	La Porte city, TX	33,800
Golden city, CO	18,867	La Vista city, NE	15,758
Golden Valley city, MN	20,371	Lafayette city, CO	24,453
Goodyear city, AZ	65,275	Laguna Beach city, CA	22,723
Grafton village, WI	11,459	Laguna Hills city, CA	30,344
Grand Blanc city, MI	8,276	Laguna Niguel city, CA	62,979
Grand Island city, NE	48,520	Lake Oswego city, OR	36,619
Grants Pass city, OR	34,533	Lake Stevens city, WA	28,069
Grass Valley city, CA	12,860	Lake Worth city, FL	34,910
Greeley city, CO	92,889	Lake Zurich village, IL	19,631
Greenville city, NC	84,554	Lakeville city, MN	55,954
Greenwich town, CT	61,171	Lakewood city, CO	142,980
Greenwood Village city, CO	13,925	Lakewood city, WA	58,163
Greer city, SC	25,515	Lane County, OR	351,715
Guilford County, NC	488,406	Larimer County, CO	299,630
Gunnison County, CO	15,324	Las Cruces city, NM	97,618
Hailey city, ID	7,960	Las Vegas city, NV	583,756
Haines Borough, AK	2,508	Lawrence city, KS	87,643
Hallandale Beach city, FL	37,113	Lee's Summit city, MO	91,364
Hamilton city, OH	62,477	Lehi city, UT	47,407
Hanover County, VA	99,863	Lenexa city, KS	48,190
Harrisonburg city, VA	48,914	Lewis County, NY	27,087
Harrisonville city, MO	10,019	Lewiston city, ID	31,894
Hayward city, CA	144,186	Lewisville city, TX	95,290
Henderson city, NV	257,729	Libertyville village, IL	20,315
Herndon town, VA	23,292	Lincoln city, NE	258,379
High Point city, NC	104,371	Lindsborg city, KS	3,458
Highland Park city, IL	29,763	Littleton city, CO	41,737
Highlands Ranch CDP, CO	96,713	Livermore city, CA	80,968
Holland city, MI	33,051	Lombard village, IL	43,165
Honolulu County, HI	953,207	Lone Tree city, CO	10,218
Hooksett town, NH	13,451	Long Grove village, IL	8,043
Hopkins city, MN	17,591	Longmont city, CO	86,270
Hopkinton town, MA	14,925	Longview city, TX	80,455
Hoquiam city, WA	8,726	Los Alamos County, NM	17,950
Horry County, SC	269,291	Louisville city, CO	18,376
Hudson city, OH	22,262	Lynchburg city, VA	75,568
Hudsonville city, MI	7,116	Lynnwood city, WA	35,836
Huntersville town, NC	46,773	Macomb County, MI	840,978
Hurst city, TX	37,337	Manhattan Beach city, CA	35,135
Hutchinson city, MN	14,178	Mankato city, MN	39,309
Hutto city, TX	14,698	Maple Grove city, MN	61,567
Hyattsville city, MD	17,557	Martinez city, CA	35,824
Independence city, MO	116,830	Maryland Heights city, MO	27,472
Indian Trail town, NC	33,518	Marysville city, WA	60,020
Indianola city, IA	14,782	Matthews town, NC	27,198
Iowa City city, IA	67,862	McAllen city, TX	129,877
Irving city, TX	216,290	McDonough city, GA	22,084
Issaquah city, WA	30,434	McMinnville city, OR	32,187
Jackson County, MI	160,248	Menlo Park city, CA	32,026
James City County, VA	67,009	Mercer Island city, WA	22,699
Jefferson County, CO	534,543	Meridian charter township, MI	39,688
Jefferson County, NY	116,229	Meridian city, ID	75,092
Johnson city, TN	63,152	Merriam city, KS	11,003
Johnston city, IA	17,278	Mesa County, CO	146,723
Jupiter town, FL	55,156	Miami Beach city, FL	87,779
Kansas City city, KS	145,786	Miami city, FL	399,457
Kansas City city, MO	459,787	Middleton city, WI	17,442
Keizer city, OR	36,478	Midland city, MI	41,863
Kenmore city, WA	20,460	Milford city, DE	9,559
Kennedale city, TX	6,763	Milton city, GA	32,661
Kennett Square borough, PA	6,072	Minneapolis city, MN	382,578
Kettering city, OH	56,163	Mission Viejo city, CA	93,305
Key West city, FL	24,649	Modesto city, CA	201,165
King County, WA	1,931,249	Monterey city, CA	27,810
Kirkland city, WA	48,787	Montgomery County, VA	94,392
Kirkwood city, MO	27,540	Monticello city, UT	1,972
Knoxville city, IA	7,313	Monument town, CO	5,530

The National Citizen Survey™

Mooresville town, NC.....	32,711	Port Orange city, FL.....	56,048
Morristown city, TN.....	29,137	Portland city, OR.....	583,776
Morrisville town, NC.....	18,576	Post Falls city, ID.....	27,574
Morro Bay city, CA.....	10,234	Prince William County, VA.....	402,002
Mountain Village town, CO.....	1,320	Prior Lake city, MN.....	22,796
Mountlake Terrace city, WA.....	19,909	Pueblo city, CO.....	106,595
Naperville city, IL.....	141,853	Queen Creek town, AZ.....	26,361
Napoleon city, OH.....	8,749	Radnor township, PA.....	31,531
Needham CDP, MA.....	28,886	Ramsey city, MN.....	23,668
New Braunfels city, TX.....	57,740	Raymond town, ME.....	4,436
New Brighton city, MN.....	21,456	Raymore city, MO.....	19,206
New Hanover County, NC.....	202,667	Redmond city, WA.....	54,144
New Orleans city, LA.....	343,829	Rehoboth Beach city, DE.....	1,327
New Smyrna Beach city, FL.....	22,464	Reno city, NV.....	225,221
Newberg city, OR.....	22,068	Reston CDP, VA.....	58,404
Newport city, RI.....	24,672	Richmond city, CA.....	103,701
Newport News city, VA.....	180,719	Richmond Heights city, MO.....	8,603
Newton city, IA.....	15,254	Rifle city, CO.....	9,172
Noblesville city, IN.....	51,969	Rio Rancho city, NM.....	87,521
Nogales city, AZ.....	20,837	River Falls city, WI.....	15,000
Norfolk city, VA.....	242,803	Riverside city, CA.....	303,871
North Port city, FL.....	57,357	Riverside city, MO.....	2,937
North Richland Hills city, TX.....	63,343	Rochester Hills city, MI.....	70,995
Northglenn city, CO.....	35,789	Rock Hill city, SC.....	66,154
Novato city, CA.....	51,904	Rockville city, MD.....	61,209
Novi city, MI.....	55,224	Rogers city, MN.....	8,597
O'Fallon city, IL.....	28,281	Rolla city, MO.....	19,559
O'Fallon city, MO.....	79,329	Roselle village, IL.....	22,763
Oak Park village, IL.....	51,878	Rosemount city, MN.....	21,874
Oakland city, CA.....	390,724	Rosenberg city, TX.....	30,618
Oakley city, CA.....	35,432	Roseville city, MN.....	33,660
Ogdensburg city, NY.....	11,128	Round Rock city, TX.....	99,887
Oklahoma City city, OK.....	579,999	Royal Oak city, MI.....	57,236
Olathe city, KS.....	125,872	Saco city, ME.....	18,482
Old Town city, ME.....	7,840	Sahuarita town, AZ.....	25,259
Olmsted County, MN.....	144,248	Sammamish city, WA.....	45,780
Olympia city, WA.....	46,478	San Anselmo town, CA.....	12,336
Orland Park village, IL.....	56,767	San Antonio city, TX.....	1,327,407
Oshkosh city, WI.....	66,083	San Carlos city, CA.....	28,406
Oshkosh charter township, MI.....	21,705	San Diego city, CA.....	1,307,402
Otsego County, MI.....	24,164	San Francisco city, CA.....	805,235
Overland Park city, KS.....	173,372	San Jose city, CA.....	945,942
Oviedo city, FL.....	33,342	San Juan County, NM.....	130,044
Paducah city, KY.....	25,024	San Marcos city, CA.....	83,781
Palm Beach Gardens city, FL.....	48,452	San Marcos city, TX.....	44,894
Palm Coast city, FL.....	75,180	San Rafael city, CA.....	57,713
Palo Alto city, CA.....	64,403	Sanford city, FL.....	53,570
Papillion city, NE.....	18,894	Sangamon County, IL.....	197,465
Paradise Valley town, AZ.....	12,820	Santa Clarita city, CA.....	176,320
Park City city, UT.....	7,558	Santa Fe County, NM.....	144,170
Parker town, CO.....	45,297	Santa Monica city, CA.....	89,736
Parkland city, FL.....	23,962	Sarasota County, FL.....	379,448
Pasadena city, CA.....	137,122	Savage city, MN.....	26,911
Pasco city, WA.....	59,781	Schaumburg village, IL.....	74,227
Pasco County, FL.....	464,697	Scott County, MN.....	129,928
Pearland city, TX.....	91,252	Scottsdale city, AZ.....	217,385
Peoria city, AZ.....	154,065	Seaside city, CA.....	33,025
Peoria city, IL.....	115,007	SeaTac city, WA.....	26,909
Peoria County, IL.....	186,494	Sevierville city, TN.....	14,807
Pflugerville city, TX.....	46,936	Shawnee city, KS.....	62,209
Phoenix city, AZ.....	1,445,632	Sheboygan city, WI.....	49,288
Pinehurst village, NC.....	13,124	Shoreview city, MN.....	25,043
Piqua city, OH.....	20,522	Shorewood city, MN.....	7,307
Pitkin County, CO.....	17,148	Shorewood village, IL.....	15,615
Plano city, TX.....	259,841	Shorewood village, WI.....	13,162
Platte City city, MO.....	4,691	Sierra Vista city, AZ.....	43,888
Plymouth city, MN.....	70,576	Sioux Center city, IA.....	7,048
Pocatello city, ID.....	54,255	Sioux Falls city, SD.....	153,888
Polk County, IA.....	430,640	Skokie village, IL.....	64,784
Pompano Beach city, FL.....	99,845	Snellville city, GA.....	18,242

The National Citizen Survey™

Snowmass Village town, CO.....	2,826	Upper Arlington city, OH.....	33,771
South Lake Tahoe city, CA.....	21,403	Urbandale city, IA	39,463
Southborough town, MA.....	9,767	Vail town, CO.....	5,305
Southlake city, TX.....	26,575	Vancouver city, WA.....	161,791
Spokane Valley city, WA	89,755	Vernon Hills village, IL.....	25,113
Spring Hill city, KS.....	5,437	Vestavia Hills city, AL	34,033
Springboro city, OH.....	17,409	Victoria city, MN.....	7,345
Springfield city, MO.....	159,498	Vienna town, VA	15,687
Springville city, UT	29,466	Virginia Beach city, VA.....	437,994
St. Augustine city, FL	12,975	Wake Forest town, NC.....	30,117
St. Charles city, IL.....	32,974	Walnut Creek city, CA.....	64,173
St. Cloud city, FL.....	35,183	Washington County, MN	238,136
St. Cloud city, MN	65,842	Washington town, NH	1,123
St. Joseph city, MO	76,780	Watauga city, TX	23,497
St. Louis County, MN.....	200,226	Wauwatosa city, WI	46,396
St. Louis Park city, MN	45,250	Waverly city, IA	9,874
Stallings town, NC.....	13,831	Weddington town, NC	9,459
State College borough, PA.....	42,034	West Carrollton city, OH	13,143
Steamboat Springs city, CO	12,088	West Chester borough, PA.....	18,461
Sterling Heights city, MI	129,699	West Des Moines city, IA.....	56,609
Sugar Grove village, IL.....	8,997	Western Springs village, IL	12,975
Sugar Land city, TX.....	78,817	Westerville city, OH.....	36,120
Summit city, NJ.....	21,457	Westlake town, TX	992
Summit County, UT.....	36,324	Westminster city, CO.....	106,114
Sunnyvale city, CA	140,081	Weston town, MA.....	11,261
Surprise city, AZ.....	117,517	Wheat Ridge city, CO	30,166
Suwanee city, GA.....	15,355	White House city, TN	10,255
Tacoma city, WA.....	198,397	Wichita city, KS.....	382,368
Takoma Park city, MD	16,715	Williamsburg city, VA.....	14,068
Tamarac city, FL	60,427	Willowbrook village, IL	8,540
Temecula city, CA	100,097	Wilmington city, NC.....	106,476
Tempe city, AZ	161,719	Wilsonville city, OR.....	19,509
Temple city, TX.....	66,102	Winchester city, VA	26,203
Texarkana city, TX	36,411	Windsor town, CO.....	18,644
The Woodlands CDP, TX.....	93,847	Windsor town, CT	29,044
Thornton city, CO.....	118,772	Winnetka village, IL	12,187
Thousand Oaks city, CA.....	126,683	Winston-Salem city, NC	229,617
Tigard city, OR.....	48,035	Winter Garden city, FL.....	34,568
Tracy city, CA	82,922	Woodbury city, MN.....	61,961
Trinidad CCD, CO	12,017	Woodland city, CA.....	55,468
Tualatin city, OR	26,054	Wrentham town, MA	10,955
Tulsa city, OK	391,906	Yakima city, WA.....	91,067
Twin Falls city, ID	44,125	York County, VA.....	65,464
Tyler city, TX	96,900	Yorktown town, IN.....	9,405
Umatilla city, OR	6,906	Yountville city, CA	2,933

Western Region Communities with Populations between 85,000 and 115,000 Benchmark Comparisons

Table 77: Community Characteristics General

	Percent positive	Rank	Number of communities in comparison	Comparison to benchmark
The overall quality of life in Billings	74%	14	17	Similar
Overall image or reputation of Billings	55%	10	13	Similar
Billings as a place to live	75%	11	13	Similar
Your neighborhood as a place to live	75%	6	10	Similar
Billings as a place to raise children	68%	11	13	Similar
Billings as a place to retire	59%	12	14	Similar
Overall appearance of Billings	48%	9	11	Similar

Table 78: Community Characteristics by Facet

		Percent positive	Rank	Number of communities in comparison	Comparison to benchmark
Safety	Overall feeling of safety in Billings	55%	10	12	Lower
	In your neighborhood during the day	92%	9	13	Similar
	In Billings' downtown/commercial area during the day	68%	9	10	Lower
Mobility	Overall ease of getting to the places you usually have to visit	72%	6	9	Similar
	Availability of paths and walking trails	58%	8	11	Similar
	Ease of walking in Billings	53%	6	10	Similar
	Ease of travel by bicycle in Billings	35%	8	10	Similar
	Ease of travel by public transportation in Billings	27%	6	7	Lower
	Ease of travel by car in Billings	65%	5	10	Similar
	Ease of public parking	39%	4	6	Similar
	Traffic flow on major streets	43%	8	12	Similar
Natural Environment	Quality of overall natural environment in Billings	65%	9	10	Similar
	Cleanliness of Billings	39%	8	9	Lower
	Air quality	64%	8	9	Similar
Built Environment	Overall "built environment" of Billings (including overall design, buildings, parks and transportation systems)	43%	6	8	Lower
	Overall quality of new development in Billings	55%	5	11	Similar
	Availability of affordable quality housing	32%	7	10	Similar
	Variety of housing options	50%	6	9	Similar
	Public places where people want to spend time	51%	4	7	Similar
Economy	Overall economic health of Billings	61%	4	8	Similar
	Vibrant downtown/commercial area	42%	3	6	Similar
	Overall quality of business and service establishments in Billings	65%	4	9	Similar
	Cost of living in Billings	41%	5	7	Similar
	Shopping opportunities	65%	6	11	Similar
	Employment opportunities	56%	3	12	Higher
	Billings as a place to visit	55%	6	9	Similar
	Billings as a place to work	68%	7	14	Similar
	Health and wellness opportunities in Billings	78%	5	8	Similar
	Availability of affordable quality mental health care	45%	3	6	Similar
Recreation and Wellness	Availability of preventive health services	69%	3	7	Similar
	Availability of affordable quality health care	69%	3	8	Similar
	Availability of affordable quality food	64%	3	6	Similar
	Recreational opportunities	58%	6	10	Similar
	Fitness opportunities (including exercise classes and paths or trails, etc.)	71%	3	6	Similar

The National Citizen Survey™

		Percent positive	Rank	Number of communities in comparison	Comparison to benchmark
Education and Enrichment	Overall opportunities for education and enrichment	63%	5	8	Similar
	Opportunities to participate in religious or spiritual events and activities	81%	3	6	Similar
	Opportunities to attend cultural/arts/music activities	65%	6	11	Similar
	Adult educational opportunities	61%	3	5	Similar
	K-12 education	62%	6	9	Similar
	Availability of affordable quality child care/preschool	48%	4	8	Similar
Community Engagement	Opportunities to participate in social events and activities	65%	3	8	Similar
	Neighborliness of Billings	52%	6	8	Similar
	Openness and acceptance of the community toward people of diverse backgrounds	43%	10	11	Lower
	Opportunities to participate in community matters	61%	4	8	Similar
	Opportunities to volunteer	74%	3	8	Similar

Table 79: Governance General

	Percent positive	Rank	Number of communities in comparison	Comparison to benchmark
Services provided by the City of Billings	65%	11	16	Similar
Overall customer service by Billings employees (police, receptionists, planners, etc.)	61%	11	14	Similar
Value of services for the taxes paid to Billings	44%	10	14	Similar
Overall direction that Billings is taking	52%	8	12	Similar
Job Billings government does at welcoming citizen involvement	43%	8	12	Similar
Overall confidence in Billings government	41%	4	7	Similar
Generally acting in the best interest of the community	48%	5	8	Similar
Being honest	46%	4	7	Similar
Treating all residents fairly	45%	4	7	Similar
Services provided by the Federal Government	37%	6	8	Similar

Table 80: Governance by Facet

		Percent positive	Rank	Number of communities in comparison	Comparison to benchmark
Safety	Police services	61%	11	14	Similar
	Fire services	86%	9	10	Similar
	Ambulance or emergency medical services	85%	7	11	Similar
	Crime prevention	42%	12	13	Lower
	Fire prevention and education	62%	9	11	Similar
	Animal control	50%	10	11	Similar
	Emergency preparedness (services that prepare the community for natural disasters or other emergency situations)	46%	7	10	Similar
Mobility	Traffic enforcement	36%	13	13	Lower
	Street repair	33%	9	14	Similar
	Street cleaning	50%	9	13	Similar
	Street lighting	49%	8	11	Similar
	Snow removal	38%	13	13	Lower
	Sidewalk maintenance	35%	8	11	Similar
	Traffic signal timing	44%	8	10	Similar
Natural Environment	Bus or transit services	41%	7	8	Similar
	Garbage collection	85%	4	10	Similar
	Recycling	39%	10	10	Much lower
	Yard waste pick-up	69%	4	6	Similar

The National Citizen Survey™

		Percent positive	Rank	Number of communities in comparison	Comparison to benchmark
	Drinking water	75%	5	12	Similar
	Preservation of natural areas such as open space, farmlands and greenbelts	44%	6	8	Similar
	Billings open space	44%	7	8	Lower
Built Environment	Storm drainage	50%	9	13	Similar
	Sewer services	74%	4	14	Similar
	Utility billing	63%	4	7	Similar
	Land use, planning and zoning	35%	6	9	Similar
	Code enforcement (weeds, abandoned buildings, etc.)	24%	9	12	Similar
	Cable television	42%	5	7	Similar
	Economy	54%	4	10	Similar
Recreation and Wellness	City parks	75%	9	11	Similar
	Recreation programs or classes	67%	8	12	Similar
	Recreation centers or facilities	58%	8	11	Similar
	Health services	75%	1	6	Higher
Education and Enrichment	City-sponsored special events	52%	4	6	Similar
	Public library services	77%	6	12	Similar
Community Engagement	Public information services	53%	5	8	Similar

Table 81: Participation General

	Percent positive	Rank	Number of communities in comparison	Comparison to benchmark
Sense of community	49%	9	12	Similar
Recommend living in Billings to someone who asks	82%	8	10	Similar
Remain in Billings for the next five years	83%	6	9	Similar
Contacted Billings (in-person, phone, email or web) for help or information	36%	9	12	Similar

Table 82: Participation by Facet

		Percent positive	Rank	Number of communities in comparison	Comparison to benchmark
Safety	Stocked supplies in preparation for an emergency	31%	5	5	Similar
	Did NOT report a crime to the police	63%	6	6	Similar
	Household member was NOT a victim of a crime	79%	8	10	Similar
Mobility	Used bus, rail, subway or other public transportation instead of driving	11%	5	6	Similar
	Carpooled with other adults or children instead of driving alone	43%	4	7	Similar
	Walked or biked instead of driving	56%	3	7	Similar
Natural Environment	Made efforts to conserve water	76%	NA	NA	NA
	Made efforts to make your home more energy efficient	76%	4	5	Similar
	Recycle at home	71%	7	8	Lower
Built Environment	Did NOT observe a code violation or other hazard in Billings	37%	5	6	Similar
	NOT experiencing housing costs stress	69%	4	8	Similar
Economy	Purchase goods or services from a business located in Billings	99%	1	7	Similar
	Economy will have positive impact on income	28%	3	9	Similar
	Work inside boundaries of Billings	73%	1	7	Much higher

The National Citizen Survey™

		Percent positive	Rank	Number of communities in comparison	Comparison to benchmark
Recreation and Wellness	Used Billings recreation centers or their services	60%	2	7	Similar
	Visited a neighborhood park or City park	89%	3	8	Similar
	Eat at least 5 portions of fruits and vegetables a day	79%	6	6	Similar
	Participate in moderate or vigorous physical activity	88%	2	7	Similar
	In very good to excellent health	56%	4	7	Similar
Education and Enrichment	Used Billings public libraries or their services	56%	4	7	Similar
	Participated in religious or spiritual activities in Billings	58%	2	6	Similar
	Attended City-sponsored event	55%	2	6	Similar
Community Engagement	Campaigned or advocated for an issue, cause or candidate	24%	2	6	Similar
	Contacted Billings elected officials (in-person, phone, email or web) to express your opinion	17%	3	7	Similar
	Volunteered your time to some group/activity in Billings	52%	2	8	Higher
	Participated in a club	38%	1	7	Higher
	Talked to or visited with your immediate neighbors	96%	2	7	Similar
	Done a favor for a neighbor	85%	2	7	Similar
	Attended a local public meeting	18%	3	8	Similar
	Watched (online or on television) a local public meeting	37%	1	6	Similar
	Read or watch local news (via television, paper, computer, etc.)	86%	6	7	Similar
	Vote in local elections	84%	4	8	Similar

Communities included in Western Region Jurisdictions with Populations between 85,000 and 115,000 comparisons

The communities included in Billings' custom comparisons are listed below along with their population according to the 2010 Census.

Arvada city, CO 106,433
 Billings city, MT 104,170
 Boulder city, CO 97,385
 Centennial city, CO 100,377
 Clovis city, CA 95,631
 Davenport city, IA 99,685
 Duluth city, MN 86,265
 Highlands Ranch CDP, CO 96,713
 Las Cruces city, NM 97,618
 Lawrence city, KS 87,643

Lee's Summit city, MO 91,364
 Longmont city, CO 86,270
 Provo city, UT 112,488
 Pueblo city, CO 106,595
 Rio Rancho city, NM 87,521
 Sparks city, NV 90,264
 Spokane Valley city, WA 89,755
 Westminster city, CO 106,114
 Yakima city, WA 91,067

Appendix C: Detailed Survey Methods

The National Citizen Survey (The NCS™), conducted by National Research Center, Inc., was developed to provide communities an accurate, affordable and easy way to assess and interpret resident opinion about important local topics. Standardization of common questions and survey methods provide the rigor to assure valid results, and each community has enough flexibility to construct a customized version of The NCS.

Results offer insight into residents' perspectives about the community as a whole, including local amenities, services, public trust, resident participation and other aspects of the community in order to support budgeting, land use and strategic planning and communication with residents. Resident demographic characteristics permit comparison to the Census as well as comparison of results for different subgroups of residents. The City of Billings funded this research. Please contact Bruce McCandless, Assistant City Administrator at McCandlessB@ci.billings.mt.us if you have any questions about the survey.

Survey Validity

The question of survey validity has two parts: 1) how can a community be confident that the results from those who completed the questionnaire are representative of the results that would have been obtained had the survey been administered to the entire population? and 2) how closely do the perspectives recorded on the survey reflect what residents really believe or do?

To answer the first question, the best survey research practices were used for the resources spent to ensure that the results from the survey respondents reflect the opinions of residents in the entire community. These practices include:

- Using a mail-out/mail-back methodology, which typically gets a higher response rate than phone for the same dollars spent. A higher response rate lessens the worry that those who did not respond are different than those who did respond.
- Selecting households at random within the community to receive the survey to ensure that the households selected to receive the survey are representative of the larger community.
- Over-sampling multi-family housing units to improve response from hard-to-reach, lower income or younger apartment dwellers.
- Selecting the respondent within the household using an unbiased sampling procedure; in this case, the "birthday method." The cover letter included an instruction requesting that the respondent in the household be the adult (18 years old or older) who most recently had a birthday, irrespective of year of birth.
- Contacting potential respondents three times to encourage response from people who may have different opinions or habits than those who would respond with only a single prompt.
- Inviting response in a compelling manner (using appropriate letterhead/logos and a signature of a visible leader) to appeal to recipients' sense of civic responsibility.
- Providing a pre-addressed, postage-paid return envelope.
- Offering the survey in Spanish or other language when requested by a given community.
- Weighting the results to reflect the demographics of the population.

The answer to the second question about how closely the perspectives recorded on the survey reflect what residents really believe or do is more complex. Resident responses to surveys are influenced by a variety of factors. For questions about service quality, residents' expectations for service quality play a role as well as the "objective" quality of the service provided, the way the resident perceives the entire community (that is, the context in which the service is provided), the scale on which the resident is asked to record his or her opinion and, of course, the opinion, itself, that a resident holds about the service. Similarly a resident's report of certain behaviors is colored by what he or she believes is the socially desirable response (e.g., reporting tolerant behaviors toward "oppressed groups," likelihood of voting for a tax increase for services to poor people, use of alternative modes of travel to work besides the single occupancy vehicle), his or her memory of the actual behavior (if it is not a question speculating about future actions, like a vote), his or her confidence that he or she can be honest without suffering any negative consequences (thus the need for anonymity) as well as the actual behavior itself.

How closely survey results come to recording the way a person really feels or behaves often is measured by the coincidence of reported behavior with observed current behavior (e.g., driving habits), reported intentions to behave with observed future behavior (e.g., voting choices) or reported opinions about current community quality

with objective characteristics of the community (e.g., feelings of safety correlated with rates of crime). There is a body of scientific literature that has investigated the relationship between reported behaviors and actual behaviors. Well-conducted surveys, by and large, do capture true respondent behaviors or intentions to act with great accuracy. Predictions of voting outcomes tend to be quite accurate using survey research, as do reported behaviors that are not about highly sensitive issues (e.g., family abuse or other illegal or morally sanctioned activities). For self-reports about highly sensitive issues, statistical adjustments can be made to correct for the respondents' tendency to report what they think the "correct" response should be.

Research on the correlation of resident opinion about service quality and "objective" ratings of service quality vary, with some showing stronger relationships than others. NRC's own research has demonstrated that residents who report the lowest ratings of street repair live in communities with objectively worse street conditions than those who report high ratings of street repair (based on road quality, delay in street repair, number of road repair employees). Similarly, the lowest rated fire services appear to be "objectively" worse than the highest rated fire services (expenditures per capita, response time, "professional" status of firefighters, breadth of services and training provided). Resident opinion commonly reflects objective performance data but is an important measure on its own. NRC principals have written, "If you collect trash three times a day but residents think that your trash haul is lousy, you still have a problem."

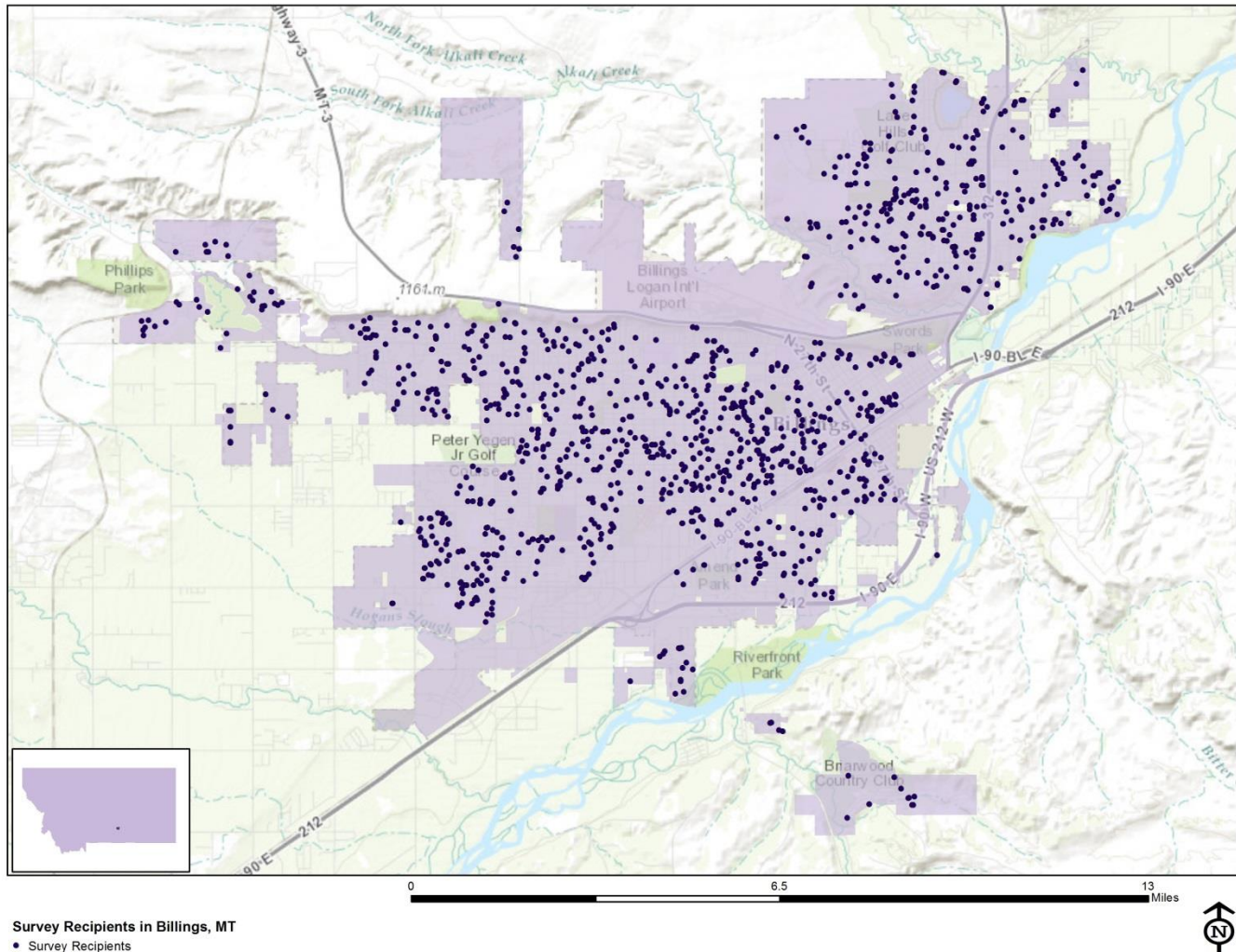
Survey Sampling

"Sampling" refers to the method by which households were chosen to receive the survey. All households within the City of Billings were eligible to participate in the survey. A list of all households within the zip codes serving Billings was purchased based on updated listings from the United States Postal Service. Since some of the zip codes that serve the City of Billings households may also serve addresses that lie outside of the community, the exact geographic location of each housing unit was compared to community boundaries using the most current municipal boundary file (updated on a quarterly basis) and addresses located outside of the City of Billings boundaries were removed from consideration.

To choose the 1,400 survey recipients, a systematic sampling method was applied to the list of households previously screened for geographic location. Systematic sampling is a procedure whereby a complete list of all possible households is culled, selecting every *Nth* one, giving each eligible household a known probability of selection, until the appropriate number of households is selected. Multi-family housing units were over sampled as residents of this type of housing typically respond at lower rates to surveys than do those in single-family housing units. Figure 1 displays a map of the households selected to receive the survey. In general, because of the random sampling techniques used, the displayed sampling density will closely mirror the overall housing unit density (which may be different from the population density). While the theory of probability assumes no bias in selection, there may be some minor variations in practice (meaning, an area with only 15% of the housing units might be sampled at an actual rate that is slightly above or below that).

An individual within each household was selected using the birthday method. The birthday method selects a person within the household by asking the "person whose birthday has most recently passed" to complete the questionnaire. The underlying assumption in this method is that day of birth has no relationship to the way people respond to surveys. This instruction was contained in the cover letter accompanying the questionnaire.

Figure 1: Location of Survey Recipients



Survey Administration and Response

Selected households received three mailings, one week apart, beginning on May 27, 2016. The first mailing was a prenotification postcard announcing the upcoming survey. The next mailing contained a letter from the Mayor inviting the household to participate, a questionnaire and a postage-paid return envelope. The final mailing contained a reminder letter, another survey and a postage-paid return envelope. The second cover letter asked those who had not completed the survey to do so and those who had already done so to refrain from turning in another survey. Completed surveys were collected over the following six weeks.

About 5% of the 1,400 surveys mailed were returned because the housing unit was vacant or the postal service was unable to deliver the survey as addressed. Of the remaining households that received the survey, 395 completed the survey, providing an overall response rate of 30%. Of the 395 completed surveys, 13 were completed online.

Confidence Intervals

It is customary to describe the precision of estimates made from surveys by a “level of confidence” and accompanying “confidence interval” (or margin of error). A traditional level of confidence, and the one used here, is 95%. The 95% confidence interval can be any size and quantifies the sampling error or imprecision of the survey results because some residents’ opinions are relied on to estimate all residents’ opinions.¹

¹ A 95% confidence interval indicates that for every 100 random samples of this many residents, 95 of the confidence intervals created will include the “true” population response. This theory is applied in practice to mean that the “true” perspective of the target population lies within the confidence interval created for a single survey. For example, if 75% of residents rate a service as “excellent” or “good,” then the 4% margin of error (for the 95% confidence interval) indicates that the range of likely responses for the entire community is between 71% and 79%.

The National Citizen Survey™

The margin of error for the City of Billings survey is no greater than plus or minus five percentage points around any given percent reported for the entire sample (395 completed surveys).

For subgroups of responses, the margin of error increases because the sample size for the subgroup is smaller. For subgroups of approximately 100 respondents, the margin of error is plus or minus 10 percentage points.

Survey Processing (Data Entry)

Upon receipt, completed surveys were assigned a unique identification number. Additionally, each survey was reviewed and “cleaned” as necessary. For example, a question may have asked a respondent to pick two items out of a list of five, but the respondent checked three; in this case, NRC would use protocols to randomly choose two of the three selected items for inclusion in the dataset.

All surveys then were entered twice into an electronic dataset; any discrepancies were resolved in comparison to the original survey form. Range checks as well as other forms of quality control were also performed.

Survey Data Weighting

The demographic characteristics of the survey sample were compared to those found in the 2010 Census and American Community Survey estimates for adults in the City of Billings. The primary objective of weighting survey data is to make the survey sample reflective of the larger population of the community. The characteristics used for weighting were housing tenure, housing unit type, sex and age. The results of the weighting scheme are presented in the following table.

Table 83: Billings, MT 2016 Weighting Table

Characteristic	Population Norm	Unweighted Data	Weighted Data
Housing			
Rent home	36%	24%	36%
Own home	64%	76%	64%
Detached unit	70%	74%	70%
Attached unit	30%	26%	30%
Race and Ethnicity			
White	92%	93%	91%
Not white	8%	7%	9%
Not Hispanic	96%	98%	97%
Hispanic	4%	2%	3%
Sex and Age			
Female	52%	62%	52%
Male	48%	38%	48%
18-34 years of age	31%	12%	31%
35-54 years of age	34%	23%	34%
55+ years of age	35%	65%	36%
Females 18-34	16%	7%	16%
Females 35-54	17%	16%	17%
Females 55+	19%	39%	19%
Males 18-34	15%	5%	15%
Males 35-54	17%	7%	17%
Males 55+	16%	26%	16%

and 79%. This source of uncertainty is called sampling error. In addition to sampling error, other sources of error may affect any survey, including the non-response of residents with opinions different from survey responders. Though standardized on The NCS, on other surveys, differences in question wording, order, translation and data entry, as examples, can lead to somewhat varying results.

Survey Data Analysis and Reporting

The survey dataset was analyzed using the Statistical Package for the Social Sciences (SPSS). For the most part, the percentages presented in the reports represent the “percent positive.” The percent positive is the combination of the top two most positive response options (i.e., “excellent” and “good,” “very safe” and “somewhat safe,” “essential” and “very important,” etc.), or, in the case of resident behaviors/participation, the percent positive represents the proportion of respondents indicating “yes” or participating in an activity at least once a month.

On many of the questions in the survey respondents may answer “don’t know.” The proportion of respondents giving this reply is shown in the full set of responses included in Appendix A. However, these responses have been removed from the analyses presented in the reports. In other words, the tables and graphs display the responses from respondents who had an opinion about a specific item.

Appendix D: Survey Materials